

Product Name: Tau Rabbit Monoclonal Antibody**Catalog #: AMRe83682**

For research use only.

Summary

Description	Recombinant rabbit monoclonal antibody
Host	Rabbit
Application	WB,IHC,IP
Reactivity	Human,Mouse,Rat
Conjugation	Unconjugated
Modification	Unmodified
Isotype	IgG
Clonality	Monoclonal
Form	Liquid
Concentration	0.68mg/ml. The concentration of this product may be batch-dependent.
Storage	Aliquot and store at -20°C (valid for 12 months). Avoid freeze/thaw cycles.
Shipping	Ice bags
Buffer	Purified antibody in PBS with 0.05% sodium azide,0.05% protective protein and 50% glycerol.
Purification	Affinity Purification

Application

Dilution Ratio	WB 1:1000-1:2000,IHC 1:100-1:200,IP 1:20-1:50
Molecular Weight	Calculated MW: 79 kDa ; Observed MW: 50-80 kDa

Antigen Information

Gene Name	Tau
Alternative Names	MAPT; Microtubule-associated protein tau; MTBT1; Neurofibrillary tangle protein; Paired helical filament-tau; PHF-tau;Tau
Gene ID	
SwissProt ID	P10636
Immunogen	A synthesized peptide derived from human Tau

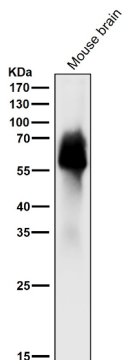
Background

Promotes microtubule assembly and stability, and might be involved in the establishment and maintenance of neuronal

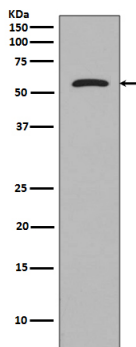
polarity. The C-terminus binds axonal microtubules while the N-terminus binds neural plasma membrane components, suggesting that tau functions as a linker protein between both.

Research Area

Image Data



All lanes use the Antibody at 1:1K dilution for 1 hour at room temperature.



Western blot analysis of Tau expression in SH-SY5Y cell lysate.