
Product Name: Cubilin Rabbit Monoclonal Antibody**Catalog #: AMRe83681**

For research use only.

Summary

| | |
|----------------------|---|
| Description | Recombinant rabbit monoclonal antibody |
| Host | Rabbit |
| Application | WB,IHC |
| Reactivity | Human |
| Conjugation | Unconjugated |
| Modification | Unmodified |
| Isotype | IgG |
| Clonality | Monoclonal |
| Form | Liquid |
| Concentration | 0.68mg/ml. The concentration of this product may be batch-dependent. |
| Storage | Aliquot and store at -20°C (valid for 12 months). Avoid freeze/thaw cycles. |
| Shipping | Ice bags |
| Buffer | Purified antibody in PBS with 0.05% sodium azide,0.05% protective protein and 50% glycerol. |
| Purification | Affinity Purification |

Application

| | |
|-------------------------|----------------------------------|
| Dilution Ratio | WB 1:1000-1:2000,IHC 1:100-1:200 |
| Molecular Weight | 399 kDa |

Antigen Information

| | |
|--------------------------|---|
| Gene Name | Cubilin |
| Alternative Names | Cubilin; Cubn; IFCR; MGA1; Cubilin precursor; megaloblastic anemia 1;;Cubilin |
| Gene ID | |
| SwissProt ID | O60494 |
| Immunogen | A synthesized peptide derived from human Cubilin |

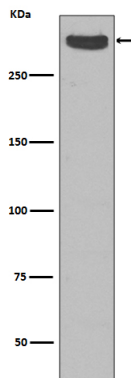
Background

Endocytic receptor which plays a role in lipoprotein, vitamin and iron metabolism by facilitating their uptake. Acts together with LRP2 to mediate endocytosis of high-density lipoproteins, GC, hemoglobin, ALB, TF and SCGB1A1. Acts together with AMN to

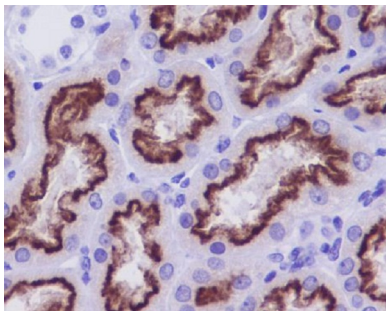
mediate endocytosis of the CBLIF-cobalamin complex.

Research Area

Image Data



Western blot analysis of Cubilin expression in Human fetal kidney lysate.



Immunohistochemical analysis of paraffin-embedded human kidney, using Cubilin Antibody.