

---

**Product Name: Lrp2/Megalin Rabbit Monoclonal Antibody****Catalog #: AMRe83680**

For research use only.

**Summary**

<b>Description</b>	Recombinant rabbit monoclonal antibody
<b>Host</b>	Rabbit
<b>Application</b>	WB
<b>Reactivity</b>	Human, Mouse, Rat
<b>Conjugation</b>	Unconjugated
<b>Modification</b>	Unmodified
<b>Isotype</b>	IgG
<b>Clonality</b>	Monoclonal
<b>Form</b>	Liquid
<b>Concentration</b>	0.68mg/ml. The concentration of this product may be batch-dependent.
<b>Storage</b>	Aliquot and store at -20°C (valid for 12 months). Avoid freeze/thaw cycles.
<b>Shipping</b>	Ice bags
<b>Buffer</b>	Purified antibody in PBS with 0.05% sodium azide, 0.05% protective protein and 50% glycerol.
<b>Purification</b>	Affinity Purification

**Application**

<b>Dilution Ratio</b>	WB 1:1000-1:2000
<b>Molecular Weight</b>	Calculated MW: 522 kDa ; Observed MW: 280 kDa

**Antigen Information**

<b>Gene Name</b>	Lrp2/Megalin
<b>Alternative Names</b>	Low-density lipoprotein receptor-related protein 2; LRP-2; Glycoprotein 330; gp330; Megalin; LRP2; DBS;;LRP2
<b>Gene ID</b>	
<b>SwissProt ID</b>	P98164
<b>Immunogen</b>	A synthesized peptide derived from human LRP2

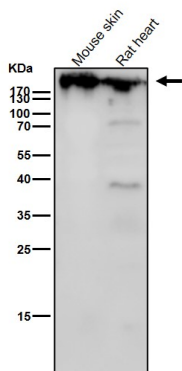
**Background**

LRP2, also named as gp330 and Megalin, belongs to the LDLR family. It acts together with cubilin to mediate HDL endocytosis.

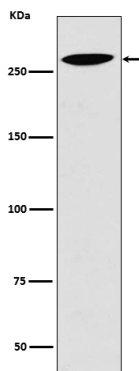
LRP2 may participate in regulation of parathyroid-hormone and para-thyroid-hormone-related protein release. Defects in LRP2 are the cause of Donnai-Barrow syndrome (DBS). The antibody is specific to LRP2.

## Research Area

## Image Data



All lanes use the Antibody at 1:1K dilution for 1 hour at room temperature.



Western blot analysis of Lrp2 expression in 293T cell lysate.