
Product Name: ECadherin Rabbit Monoclonal Antibody**Catalog #: AMRe83679**

For research use only.

Summary

Description	Recombinant rabbit monoclonal antibody
Host	Rabbit
Application	WB,IHC,ICC/IF,ICC,FC
Reactivity	Human
Conjugation	Unconjugated
Modification	Unmodified
Isotype	IgG
Clonality	Monoclonal
Form	Liquid
Concentration	0.39mg/ml. The concentration of this product may be batch-dependent.
Storage	Aliquot and store at -20°C (valid for 12 months). Avoid freeze/thaw cycles.
Shipping	Ice bags
Buffer	Purified antibody in PBS with 0.05% sodium azide,0.05% protective protein and 50% glycerol.
Purification	Affinity Purification

Application

Dilution Ratio	WB 1:1000-1:5000,IHC 1:100-1:200,ICC/IF 1:50-1:200,ICC 1:50-1:200,FC 1:20-1:100
Molecular Weight	Calculated MW: 97 kDa ; Observed MW: 135 kDa

Antigen Information

Gene Name	ECadherin
Alternative Names	Arc1;Cadherin 1;CAM 120/80;CD324;CDHE;E-Cad/CTF3;ECAD;Epithelial cadherin ;LCAM;Uvomorulin;CDH1;;E Cadherin
Gene ID	
SwissProt ID	Q15582
Immunogen	A synthesized peptide derived from human E Cadherin

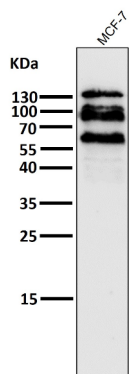
Background

Cadherins are calcium-dependent cell adhesion proteins. They preferentially interact with themselves in a homophilic manner

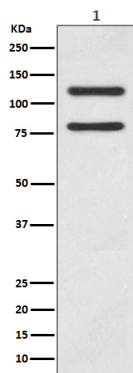
in connecting cells; cadherins may thus contribute to the sorting of heterogeneous cell types. CDH1 is involved in mechanisms regulating cell-cell adhesions, mobility and proliferation of epithelial cells.

Research Area

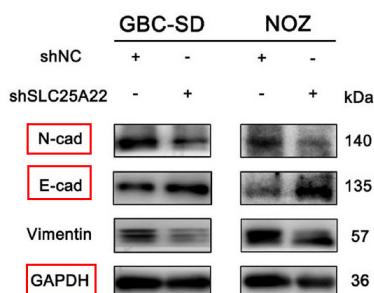
Image Data



All lanes use the Antibody at 1:5K dilution for 1 hour at room temperature.

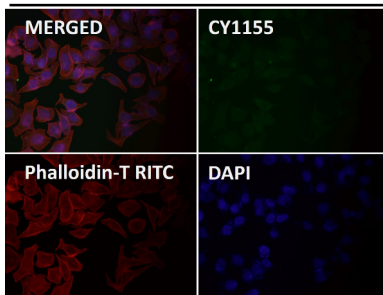


Western blot analysis of E-cadherin expression in MCF7 cell lysate.

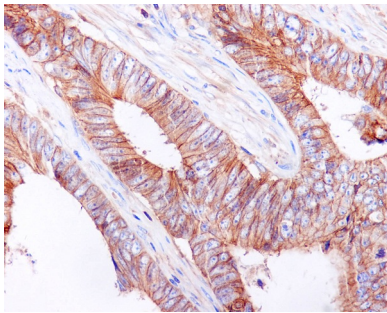


SLC25A22 promotes proliferation and metastasis by activating MAPK/ERK pathway in gallbladder cancer. -Cancer Cell International

Hela



Immunofluorescent analysis using the Antibody at 1:50 dilution.



Immunohistochemical analysis of paraffin-embedded human colon cancer, using E Cadherin Antibody.