

Product Name: Histone H4 Rabbit Monoclonal Antibody**Catalog #: AMRe21614**

For research use only.

Summary

Description	Recombinant rabbit monoclonal antibody
Host	Rabbit
Application	WB,IHC,ICC/IF,ELISA,IP
Reactivity	Human,Mouse,Rat
Conjugation	Unconjugated
Modification	Unmodified
Isotype	IgG,Kappa
Clonality	Monoclonal
Form	Liquid
Concentration	0.3mg/ml. The concentration of this product may be batch-dependent.
Storage	Aliquot and store at -20°C (valid for 12 months). Avoid freeze/thaw cycles.
Shipping	Ice bags
Buffer	PBS, 50% glycerol, 0.05% Proclin 300, 0.05%protective protein
Purification	Protein A

Application

Dilution Ratio	WB 1:1000-1:5000,IHC 1:200-1:1000,ICC/IF 1:200-1:1000,ELISA 1:5000-1:20000,IP 1:50-1:200
Molecular Weight	Calculated MW:11kD;Observed MW:11kD

Antigen Information

Gene Name	HIST1H4A HIST1H4A;H4/A;H4FA;HIST1H4B;H4/I;H4FI;HIST1H4C;H4/G;H4FG;HIST1H4D;H4/ B;H4FB;HIST1H4E;H4/J;H4FJ;HIST1H4F;H4/C;H4FC;HIST1H4H;H4/H;H4FH;HIST1H4I;H4/ M;H4FM;HIST1H4J;H4/E;H4FE;HIST1H4K;H4/D;H4FD;HIST1H4L;H4/K;H4FK
Alternative Names	
Gene ID	121504;554313;8294;8359;8360;8361;8362;8363;8364;8365;8366;8367;8368;8370
SwissProt ID	P62805
Immunogen	A synthetic peptide of human Histone H4

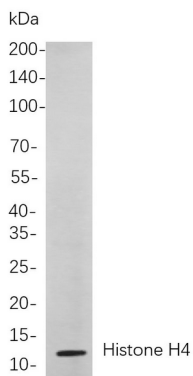
Background

Cell localization:Nucleus. Chromosome..Histones are basic nuclear proteins that are responsible for the nucleosome structure

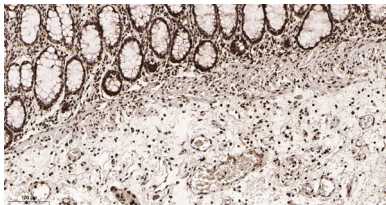
of the chromosomal fiber in eukaryotes. Two molecules of each of the four core histones (H2A, H2B, H3, and H4) form an octamer, around which approximately 146 bp of DNA is wrapped in repeating units, called nucleosomes. The linker histone, H1, interacts with linker DNA between nucleosomes and functions in the compaction of chromatin into higher order structures. This gene is intronless and encodes a replication-dependent histone that is a member of the histone H4 family. Transcripts from this gene lack polyA tails but instead contain a palindromic termination element. This gene is found in the histone microcluster on chromosome 6p21.33. [provided by RefSeq, Aug 2015],

Research Area

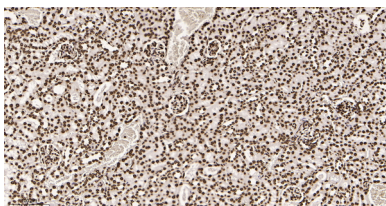
Image Data



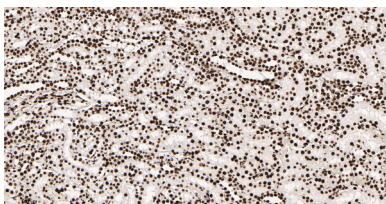
Western blot analysis of lysates from HeLa cells, using Histone H4 Rabbit mAb. The HRP-conjugated Goat anti-Rabbit IgG antibody was used to detect the antibody.



Immunohistochemical analysis of paraffin-embedded Human colon tissue. 1, Histone H4 Rabbit Monoclonal Antibody was diluted at 1:200(4°C,overnight). 2, EDTA pH 9.0 was used for antibody retrieval(>98°C,20min). 3,Secondary antibody was diluted at 1:200(room temperature, 30min).



Immunohistochemical analysis of paraffin-embedded Mouse kidney tissue. 1, Histone H4 Rabbit Monoclonal Antibody was diluted at 1:200(4°C,overnight). 2, EDTA pH 9.0 was used for antibody retrieval(>98°C,20min). 3,Secondary antibody was diluted at 1:200(room temperature, 30min).



Immunohistochemical analysis of paraffin-embedded Rat kidney tissue. 1, Histone H4 Rabbit Monoclonal Antibody was diluted at 1:200(4°C,overnight). 2, EDTA pH 9.0 was used for antibody retrieval(>98°C,20min). 3,Secondary antibody was diluted at 1:200(room temperature, 30min).