

**Product Name: AMPK  $\alpha$ 1 Rabbit Monoclonal Antibody****Catalog #: AMRe21607**

For research use only.

**Summary**

<b>Description</b>	Recombinant rabbit monoclonal antibody
<b>Host</b>	Rabbit
<b>Application</b>	WB,IHC,ICC/IF,ELISA,IP
<b>Reactivity</b>	Human,Mouse,Rat
<b>Conjugation</b>	Unconjugated
<b>Modification</b>	Unmodified
<b>Isotype</b>	IgG,Kappa
<b>Clonality</b>	Monoclonal
<b>Form</b>	Liquid
<b>Concentration</b>	0.3mg/ml. The concentration of this product may be batch-dependent.
<b>Storage</b>	Aliquot and store at -20°C (valid for 12 months). Avoid freeze/thaw cycles.
<b>Shipping</b>	Ice bags
<b>Buffer</b>	PBS, 50% glycerol, 0.05% Proclin 300, 0.05%protective protein
<b>Purification</b>	Protein A

**Application**

<b>Dilution Ratio</b>	WB 1:1000-1:5000,IHC 1:100-1:200,ICC/IF 1:200-1:1000,ELISA 1:5000-1:20000,IP 1:50-1:200
<b>Molecular Weight</b>	Calculated MW:64kD;Observed MW:64kD

**Antigen Information**

<b>Gene Name</b>	PRKAA1 PRKAA1;AMPK1;5'-AMP-activated protein kinase catalytic subunit alpha-1;AMPK subunit
<b>Alternative Names</b>	alpha-1;Acetyl-CoA carboxylase kinase;ACACA kinase;Hydroxymethylglutaryl-CoA reductase kinase;HMGCR kinase;Tau-protein kinase PRKAA1
<b>Gene ID</b>	5562.0
<b>SwissProt ID</b>	Q13131
<b>Immunogen</b>	A synthetic peptide corresponding to target protein

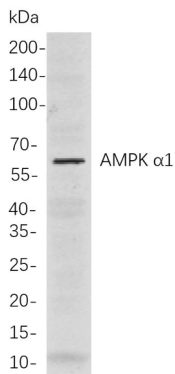
**Background**

Cell localization:Cytoplasm.The protein encoded by this gene belongs to the ser/thr protein kinase family. It is the catalytic

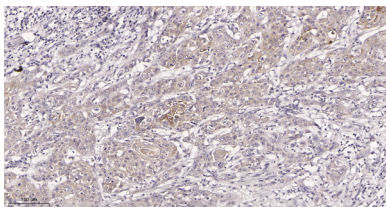
subunit of the 5'-prime-AMP-activated protein kinase (AMPK). AMPK is a cellular energy sensor conserved in all eukaryotic cells. The kinase activity of AMPK is activated by the stimuli that increase the cellular AMP/ATP ratio. AMPK regulates the activities of a number of key metabolic enzymes through phosphorylation. It protects cells from stresses that cause ATP depletion by switching off ATP-consuming biosynthetic pathways. Alternatively spliced transcript variants encoding distinct isoforms have been observed. [provided by RefSeq, Jul 2008],

## Research Area

## Image Data



Western blot analysis of lysates from HeLa cells, using AMPK  $\alpha$ 1 Rabbit mAb. The HRP-conjugated Goat anti-Rabbit IgG antibody was used to detect the antibody.



Immunohistochemical analysis of paraffin-embedded Human Cervical carcinoma tissue. 1, AMPK  $\alpha$ 1 Rabbit Monoclonal Antibody was diluted at 1:200(4°C, overnight). 2, EDTA pH 9.0 was used for antibody retrieval(>98°C, 20min). 3, Secondary antibody was diluted at 1:200(room temperature, 30min).