

Product Name: CIRBP Rabbit Monoclonal Antibody**Catalog #: AMRe21602**

For research use only.

Summary

Description	Recombinant rabbit monoclonal antibody
Host	Rabbit
Application	WB,IHC,ICC/IF,ELISA,IP
Reactivity	Human
Conjugation	Unconjugated
Modification	Unmodified
Isotype	IgG,Kappa
Clonality	Monoclonal
Form	Liquid
Concentration	0.3mg/ml. The concentration of this product may be batch-dependent.
Storage	Aliquot and store at -20°C (valid for 12 months). Avoid freeze/thaw cycles.
Shipping	Ice bags
Buffer	PBS, 50% glycerol, 0.05% Proclin 300, 0.05%protective protein
Purification	Protein A

Application

Dilution Ratio	WB 1:1000-1:5000,IHC 1:200-1:1000,ICC/IF 1:200-1:1000,ELISA 1:5000-1:20000,IP 1:50-1:200
Molecular Weight	Calculated MW:19kD;Observed MW:19kD

Antigen Information

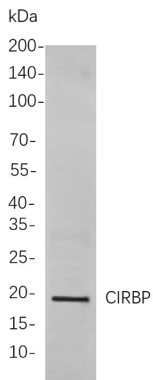
Gene Name	CIRBP
Alternative Names	A18HNRNP CIRP
Gene ID	1153.0
SwissProt ID	Q14011
Immunogen	Recombinant protein of human CIRBP

Background

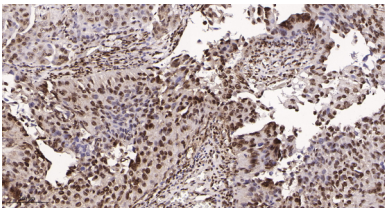
Cell localization:Nuclear.function:Seems to play an essential role in cold-induced suppression of cell proliferation.,induction:By cold stress an in response to DNA damage induced by UV irradiation or UV mimetic agents.,similarity:Contains 1 RRM (RNA recognition motif) domain.,tissue specificity:Ubiquitous.,

Research Area

Image Data



Western blot analysis of lysates from A549 cells, using CIRBP Rabbit mAb. The HRP-conjugated Goat anti-Rabbit IgG antibody was used to detect the antibody.



Immunohistochemical analysis of paraffin-embedded human bladder carcinoma tissue. 1, CIRBP Rabbit Monoclonal Antibody was diluted at 1:200(4°C, overnight). 2, EDTA pH 9.0 was used for antibody retrieval(>98°C, 20min). 3, Secondary antibody was diluted at 1:200(room temperature, 30min).