

---

**Product Name: PKM Rabbit Monoclonal Antibody****Catalog #: AMRe21601**

For research use only.

**Summary**

<b>Description</b>	Recombinant rabbit monoclonal antibody
<b>Host</b>	Rabbit
<b>Application</b>	WB,IHC,IF,ELISA
<b>Reactivity</b>	Human,Mouse,Rat
<b>Conjugation</b>	Unconjugated
<b>Modification</b>	Unmodified
<b>Isotype</b>	IgG,Kappa
<b>Clonality</b>	Monoclonal
<b>Form</b>	Liquid
<b>Concentration</b>	0.3mg/ml. The concentration of this product may be batch-dependent.
<b>Storage</b>	Aliquot and store at -20°C (valid for 12 months). Avoid freeze/thaw cycles.
<b>Shipping</b>	Ice bags
<b>Buffer</b>	PBS, 50% glycerol, 0.05% Proclin 300, 0.05%protective protein
<b>Purification</b>	Protein A

**Application**

<b>Dilution Ratio</b>	IHC 1:200-1000;WB 1:1000-5000;IF 1:200-1000;ELISA 1:5000-20000;
<b>Molecular Weight</b>	Calculated MW:57kD;Observed MW:57kD

**Antigen Information**

<b>Gene Name</b>	PKM PKM;OIP3;PK2;PK3;PKM2;Pyruvate kinase isozymes M1/M2;Cytosolic thyroid hormone-
<b>Alternative Names</b>	binding protein;CTHBP;Opa-interacting protein 3;OIP-3;Pyruvate kinase 2/3;Pyruvate kinase muscle isozyme;Thyroid hormone-binding protein 1;THBP1;Tu
<b>Gene ID</b>	5315.0
<b>SwissProt ID</b>	P14618
<b>Immunogen</b>	A synthetic peptide of human PKM

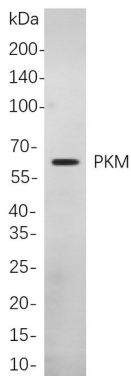
**Background**

Cell localization:Cytoplasm.This gene encodes a protein involved in glycolysis. The encoded protein is a pyruvate kinase that

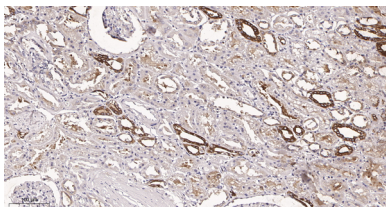
catalyzes the transfer of a phosphoryl group from phosphoenolpyruvate to ADP, generating ATP and pyruvate. This protein has been shown to interact with thyroid hormone and may mediate cellular metabolic effects induced by thyroid hormones. This protein has been found to bind Opa protein, a bacterial outer membrane protein involved in gonococcal adherence to and invasion of human cells, suggesting a role of this protein in bacterial pathogenesis. Several alternatively spliced transcript variants encoding a few distinct isoforms have been reported. [provided by RefSeq, May 2011],

## Research Area

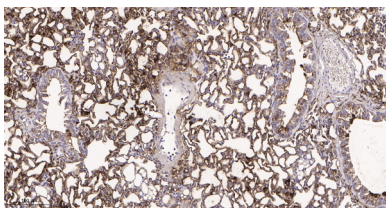
## Image Data



Western blot analysis of lysates from A549 cells, using PKM Rabbit mAb. The HRP-conjugated Goat anti-Rabbit IgG antibody was used to detect the antibody.



Immunohistochemical analysis of paraffin-embedded human kidney tissue. 1, PKM Rabbit Monoclonal Antibody was diluted at 1:200(4°C,overnight). 2, EDTA pH 9.0 was used for antibody retrieval(>98°C,20min). 3,Secondary antibody was diluted at 1:200(room temperature, 30min).



Immunohistochemical analysis of paraffin-embedded mouse lung tissue. 1, PKM Rabbit Monoclonal Antibody was diluted at 1:200(4°C,overnight). 2, EDTA pH 9.0 was used for antibody retrieval(>98°C,20min). 3,Secondary antibody was diluted at 1:200(room temperature, 30min).