
Product Name: IGF1 Receptor Rabbit Monoclonal Antibody**Catalog #: AMRe21599**

For research use only.

Summary

Description	Recombinant rabbit monoclonal antibody
Host	Rabbit
Application	WB,IHC,IF,ELISA
Reactivity	Human
Conjugation	Unconjugated
Modification	Unmodified
Isotype	IgG,Kappa
Clonality	Monoclonal
Form	Liquid
Concentration	0.3mg/ml. The concentration of this product may be batch-dependent.
Storage	Aliquot and store at -20°C (valid for 12 months). Avoid freeze/thaw cycles.
Shipping	Ice bags
Buffer	PBS, 50% glycerol, 0.05% Proclin 300, 0.05%protective protein
Purification	Protein A

Application

Dilution Ratio	IHC 1:100-200;WB 1:1000-5000;IF 1:200-1000;ELISA 1:5000-20000;
Molecular Weight	Calculated MW:154kD;Observed MW:200kD

Antigen Information

Gene Name	IGF1R
Alternative Names	IGF1R;Insulin-like growth factor 1 receptor;Insulin-like growth factor I receptor;IGF-I receptor;CD antigen CD221
Gene ID	3480.0
SwissProt ID	P08069
Immunogen	Recombinant protein of human IGF-I receptor beta

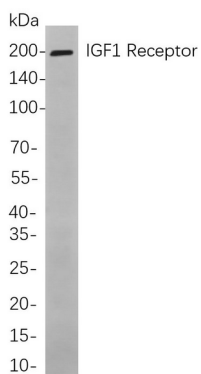
Background

Cell localization:Membranous.This receptor binds insulin-like growth factor with a high affinity. It has tyrosine kinase activity. The insulin-like growth factor I receptor plays a critical role in transformation events. Cleavage of the precursor generates alpha

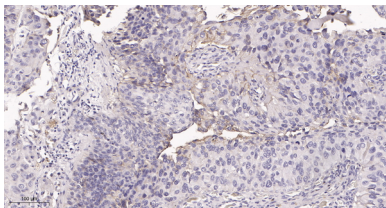
and beta subunits. It is highly overexpressed in most malignant tissues where it functions as an anti-apoptotic agent by enhancing cell survival. Alternatively spliced transcript variants encoding distinct isoforms have been found for this gene. [provided by RefSeq, May 2014],

Research Area

Image Data



Western blot analysis of lysates from LoVo cells, using IGF1 Receptor Rabbit mAb. The HRP-conjugated Goat anti-Rabbit IgG antibody was used to detect the antibody.



Immunohistochemical analysis of paraffin-embedded human bladder carcinoma tissue. 1, IGF1 Receptor Rabbit Monoclonal Antibody was diluted at 1:200(4°C,overnight). 2, EDTA pH 9.0 was used for antibody retrieval(>98°C,20min). 3,Secondary antibody was diluted at 1:200(room temperature, 30min).