

Product Name: Collagen III Rabbit Monoclonal Antibody
Catalog #: AMRe21597



Summary

Production Name	Collagen III Rabbit Monoclonal Antibody
Description	Rabbit Monoclonal Antibody
Host	Rabbit
Application	WB,IHC,IF,IP,ELISA
Reactivity	Human,Mouse,Rat

Performance

Conjugation	Unconjugated
Modification	Unmodified
Isotype	IgG,Kappa
Clonality	Monoclonal
Form	Liquid
Storage	Store at 4°C short term. Aliquot and store at -20°C long term. Avoid freeze/thaw cycles.
Buffer	PBS, 50% glycerol, 0.05% Proclin 300, 0.05%protective protein
Purification	Protein A

Immunogen

Gene Name	COL3A1
Alternative Names	COL3A1
Gene ID	1281.0
SwissProt ID	P02461.

Application

Dilution Ratio	IHC 1:20-100;WB 1:1000-5000;IF 1:200-1000;ELISA 1:5000-20000;IP 1:50-200
Molecular Weight	Calculated MW:138kD;Observed MW:150kD

Background

Cell localization:Cytoplasm.collagen type III alpha 1 chain(COL3A1) Homo sapiens This gene encodes the pro-alpha1 chains

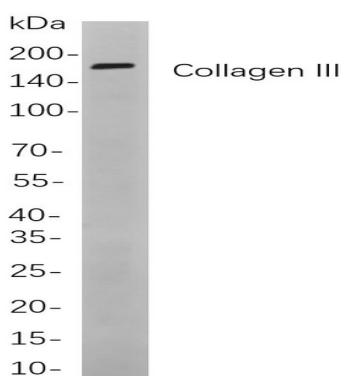
Product Name: Collagen III Rabbit Monoclonal Antibody
Catalog #: AMRe21597



of type III collagen, a fibrillar collagen that is found in extensible connective tissues such as skin, lung, uterus, intestine and the vascular system, frequently in association with type I collagen. Mutations in this gene are associated with Ehlers-Danlos syndrome types IV, and with aortic and arterial aneurysms. Two transcripts, resulting from the use of alternate polyadenylation signals, have been identified for this gene. [provided by R. Dalgleish, Feb 2008],

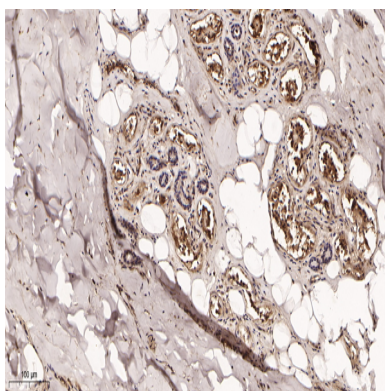
Research Area

Image Data



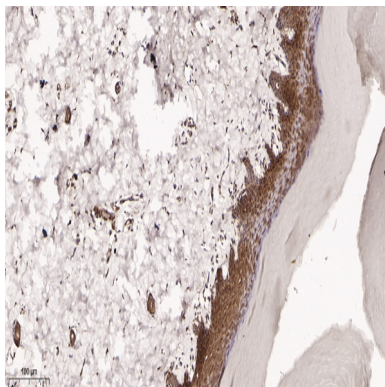
Western blot analysis of lysates from Rat womb

cells, using Collagen III Rabbit mAb. The HRP-conjugated Goat anti-Rabbit IgG antibody was used to detect the antibody.



Immunohistochemical analysis of paraffin-embedded human skin tissue. 1, primary Antibody was diluted at 1:200(4°C,overnight). 2, EDTA pH 9.0 was used for antibody retrieval(>98°C,20min). 3,Secondary antibody was diluted at 1:200(room temperature, 30min).

Product Name: Collagen III Rabbit Monoclonal Antibody
Catalog #: AMRe21597



Immunohistochemical analysis of paraffin-embedded rat skin tissue. 1, primary Antibody was diluted at 1:200(4°C,overnight). 2, EDTA pH 9.0 was used for antibody retrieval(>98°C,20min). 3,Secondary antibody was diluted at 1:200(room temperature, 30min).

Note

For research use only.