
Product Name: KLF4 Rabbit Monoclonal Antibody**Catalog #: AMRe21595**

For research use only.

Summary

| | |
|----------------------|---|
| Description | Recombinant rabbit monoclonal antibody |
| Host | Rabbit |
| Application | WB,IHC,ICC/IF,ELISA,IP |
| Reactivity | Human,Mouse,Rat |
| Conjugation | Unconjugated |
| Modification | Unmodified |
| Isotype | IgG,Kappa |
| Clonality | Monoclonal |
| Form | Liquid |
| Concentration | 0.3mg/ml. The concentration of this product may be batch-dependent. |
| Storage | Aliquot and store at -20°C (valid for 12 months). Avoid freeze/thaw cycles. |
| Shipping | Ice bags |
| Buffer | PBS, 50% glycerol, 0.05% Proclin 300, 0.05%protective protein |
| Purification | Protein A |

Application

| | |
|-------------------------|--|
| Dilution Ratio | WB 1:1000-1:5000,IHC 1:200-1:1000,ICC/IF 1:200-1:1000,ELISA 1:5000-1:20000,IP 1:50-1:200 |
| Molecular Weight | Calculated MW:55kD;Observed MW:60kD |

Antigen Information

| | |
|--------------------------|---|
| Gene Name | KLF4 |
| Alternative Names | KLF4;EZF;GKLF;Krueppel-like factor 4;Epithelial zinc finger protein EZF;Gut-enriched krueppel-like factor |
| Gene ID | 9314.0 |
| SwissProt ID | O43474 |
| Immunogen | Recombinant protein of human KLF4 |

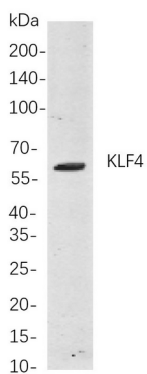
Background

Cell localization:Nuclear.This gene encodes a protein that belongs to the Kruppel family of transcription factors. The encoded zinc finger protein is required for normal development of the barrier function of skin. The encoded protein is thought to control

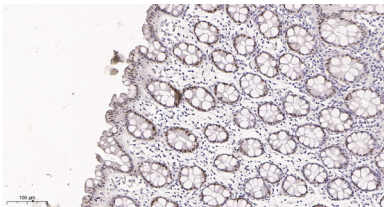
the G1-to-S transition of the cell cycle following DNA damage by mediating the tumor suppressor gene p53. Mice lacking this gene have a normal appearance but lose weight rapidly, and die shortly after birth due to fluid evaporation resulting from compromised epidermal barrier function. Alternative splicing results in multiple transcript variants encoding different isoforms. [provided by RefSeq, Sep 2015],

Research Area

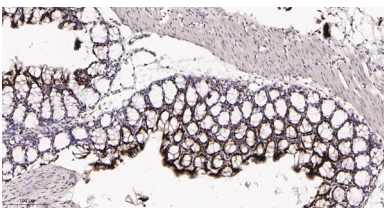
Image Data



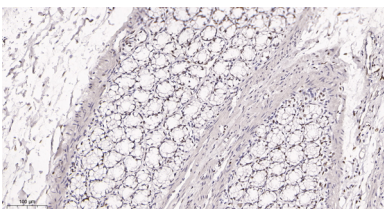
Western blot analysis of lysates from HCT-116 cells, using KLF4 Rabbit mAb. The HRP-conjugated Goat anti-Rabbit IgG antibody was used to detect the antibody.



Immunohistochemical analysis of paraffin-embedded human colon tissue. 1, KLF4 Rabbit Monoclonal Antibody was diluted at 1:200(4°C,overnight). 2, EDTA pH 9.0 was used for antibody retrieval(>98°C,20min). 3,Secondary antibody was diluted at 1:200(room temperature, 30min).



Immunohistochemical analysis of paraffin-embedded mouse colon tissue. 1, KLF4 Rabbit Monoclonal Antibody was diluted at 1:200(4°C,overnight). 2, EDTA pH 9.0 was used for antibody retrieval(>98°C,20min). 3,Secondary antibody was diluted at 1:200(room temperature, 30min).



Immunohistochemical analysis of paraffin-embedded rat colon tissue. 1, KLF4 Rabbit Monoclonal Antibody was diluted at 1:200(4°C,overnight). 2, EDTA pH 9.0 was used for antibody retrieval(>98°C,20min). 3,Secondary antibody was diluted at 1:200(room temperature, 30min).