

Product Name: Cyclin E1 Rabbit Monoclonal Antibody
Catalog #: AMRe21594



Summary

Production Name	Cyclin E1 Rabbit Monoclonal Antibody
Description	Rabbit Monoclonal Antibody
Host	Rabbit
Application	WB,IHC,IF,IP,ELISA
Reactivity	Human,Mouse,Rat

Performance

Conjugation	Unconjugated
Modification	Unmodified
Isotype	IgG,Kappa
Clonality	Monoclonal
Form	Liquid
Storage	Store at 4°C short term. Aliquot and store at -20°C long term. Avoid freeze/thaw cycles.
Buffer	PBS, 50% glycerol, 0.05% Proclin 300, 0.05%protective protein
Purification	Protein A

Immunogen

Gene Name	CCNE1
Alternative Names	CCNE1;CCNE;G1/S-specific cyclin-E1
Gene ID	898.0
SwissProt ID	P24864.

Application

Dilution Ratio	IHC 1:400-1000;WB 1:1000-5000;IF 1:200-1000;ELISA 1:5000-20000;IP 1:50-200
Molecular Weight	Calculated MW:47kD;Observed MW:47kD

Background

Cell localization:Nuclear.The protein encoded by this gene belongs to the highly conserved cyclin family, whose members

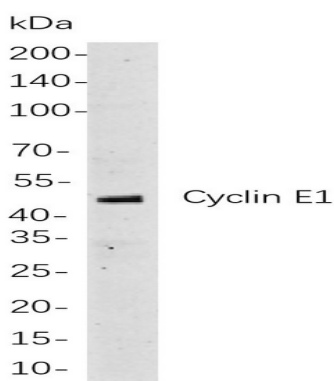
Product Name: Cyclin E1 Rabbit Monoclonal Antibody
Catalog #: AMRe21594



are characterized by a dramatic periodicity in protein abundance through the cell cycle. Cyclins function as regulators of CDK kinases. Different cyclins exhibit distinct expression and degradation patterns which contribute to the temporal coordination of each mitotic event. This cyclin forms a complex with and functions as a regulatory subunit of CDK2, whose activity is required for cell cycle G1/S transition. This protein accumulates at the G1-S phase boundary and is degraded as cells progress through S phase. Overexpression of this gene has been observed in many tumors, which results in chromosome instability, and thus may contribute to tumorigenesis. This protein was found to associate with, and be involved in, the phosphorylation of NPAT protein (nuclear protein mapped to the ATM locus), which participates in

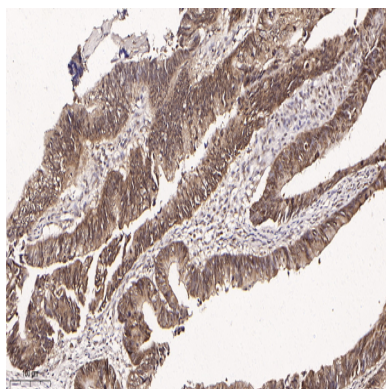
Research Area

Image Data



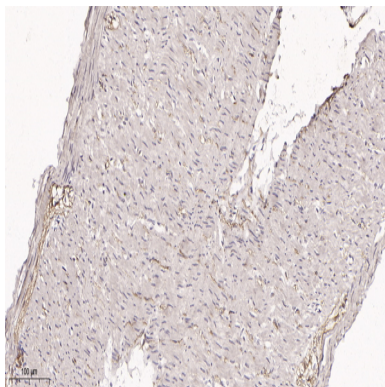
Western blot analysis of lysates from Hela

cells, using Cyclin E1 Rabbit mAb. The HRP-conjugated Goat anti-Rabbit IgG antibody was used to detect the antibody.



Immunohistochemical analysis of paraffin-embedded human colon tissue. 1, primary Antibody was diluted at 1:200(4°C,overnight). 2, EDTA pH 9.0 was used for antibody retrieval(>98°C,20min). 3,Secondary antibody was diluted at 1:200(room temperature, 30min).

Product Name: Cyclin E1 Rabbit Monoclonal Antibody
Catalog #: AMRe21594



Immunohistochemical analysis of paraffin-embedded rat colon tissue. 1, primary Antibody was diluted at 1:200(4°C,overnight). 2, EDTA pH 9.0 was used for antibody retrieval(>98°C,20min). 3,Secondary antibody was diluted at 1:200(room temperature, 30min).

Note

For research use only.