

**Product Name: CD105 Rabbit Monoclonal Antibody**  
**Catalog #: AMRe21593**



---

## Summary

<b>Production Name</b>	CD105 Rabbit Monoclonal Antibody
<b>Description</b>	Rabbit Monoclonal Antibody
<b>Host</b>	Rabbit
<b>Application</b>	WB,IHC,IF,IP,ELISA
<b>Reactivity</b>	Human

## Performance

<b>Conjugation</b>	Unconjugated
<b>Modification</b>	Unmodified
<b>Isotype</b>	IgG,Kappa
<b>Clonality</b>	Monoclonal
<b>Form</b>	Liquid
<b>Storage</b>	Store at 4°C short term. Aliquot and store at -20°C long term. Avoid freeze/thaw cycles.
<b>Buffer</b>	PBS, 50% glycerol, 0.05% Proclin 300, 0.05%protective protein
<b>Purification</b>	Protein A

## Immunogen

<b>Gene Name</b>	ENG
<b>Alternative Names</b>	ENG END
<b>Gene ID</b>	2022.0
<b>SwissProt ID</b>	P17813.

## Application

<b>Dilution Ratio</b>	IHC 1:100-200;WB 1:1000-5000;IF 1:200-1000;ELISA 1:5000-20000;IP 1:50-200
<b>Molecular Weight</b>	Calculated MW:70kD;Observed MW:95kD

## Background

Cell localization:Cytoplasm.This gene encodes a homodimeric transmembrane protein which is a major glycoprotein of the

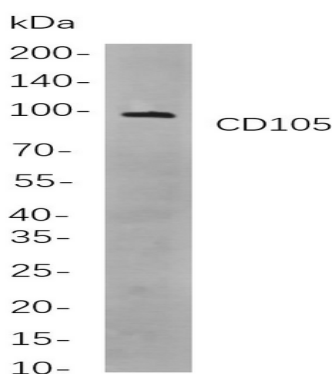
**Product Name: CD105 Rabbit Monoclonal Antibody**  
**Catalog #: AMRe21593**



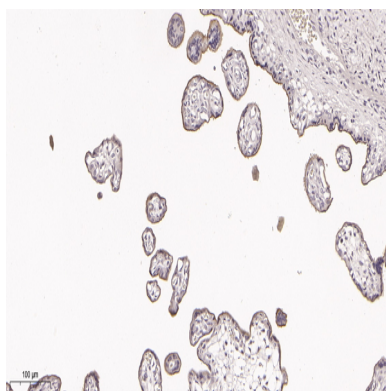
vascular endothelium. This protein is a component of the transforming growth factor beta receptor complex and it binds to the beta1 and beta3 peptides with high affinity. Mutations in this gene cause hereditary hemorrhagic telangiectasia, also known as Osler-Rendu-Weber syndrome 1, an autosomal dominant multisystemic vascular dysplasia. This gene may also be involved in preeclampsia and several types of cancer. Alternatively spliced transcript variants encoding different isoforms have been found for this gene. [provided by RefSeq, May 2013],

## Research Area

## Image Data



Western blot analysis of lysates from HeLa cells, using CD105 Rabbit mAb. The HRP-conjugated Goat anti-Rabbit IgG antibody was used to detect the antibody.



Immunohistochemical analysis of paraffin-embedded Human placenta tissue. 1, primary Antibody was diluted at 1:200(4°C,overnight). 2, EDTA pH 9.0 was used for antibody retrieval(>98°C,20min). 3,Secondary antibody was diluted at 1:200(room temperature, 30min).

## Note

For research use only.

**Product Name: CD105 Rabbit Monoclonal Antibody**  
**Catalog #: AMRe21593**

---

