
Product Name: CD31 Rabbit Monoclonal Antibody**Catalog #: AMRe21591**

For research use only.

Summary

Description	Recombinant rabbit monoclonal antibody
Host	Rabbit
Application	WB,IHC,IF,ELISA
Reactivity	Human,Monkey
Conjugation	Unconjugated
Modification	Unmodified
Isotype	IgG,Kappa
Clonality	Monoclonal
Form	Liquid
Concentration	0.3mg/ml. The concentration of this product may be batch-dependent.
Storage	Aliquot and store at -20°C (valid for 12 months). Avoid freeze/thaw cycles.
Shipping	Ice bags
Buffer	PBS, 50% glycerol, 0.05% Proclin 300, 0.05%protective protein
Purification	Protein A

Application

Dilution Ratio	IHC 1:200-1000;WB 1:1000-5000;IF 1:200-1000;ELISA 1:5000-20000;
Molecular Weight	Calculated MW:83kD;Observed MW:130kD

Antigen Information

Gene Name	PECAM1
Alternative Names	PECAM1
Gene ID	5175.0
SwissProt ID	P16284
Immunogen	A synthetic peptide corresponding to target protein

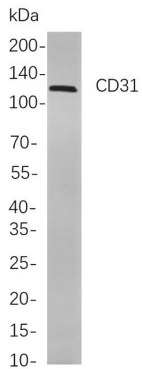
Background

Cell localization:Membranous.The protein encoded by this gene is found on the surface of platelets, monocytes, neutrophils, and some types of T-cells, and makes up a large portion of endothelial cell intercellular junctions. The encoded protein is a member of the immunoglobulin superfamily and is likely involved in leukocyte migration, angiogenesis, and integrin activation.

[provided by RefSeq, May 2010],

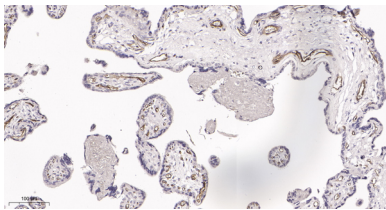
Research Area

Image Data



Western blot analysis of lysates from THP-1

cells, using CD31 Rabbit mAb. The HRP-conjugated Goat anti-Rabbit IgG antibody was used to detect the antibody.



Immunohistochemical analysis of paraffin-embedded human placenta tissue. 1, CD31 Rabbit Monoclonal Antibody was diluted at 1:200(4°C,overnight). 2, EDTA pH 9.0 was used for antibody retrieval(>98°C,20min). 3,Secondary antibody was diluted at 1:200(room temperature, 30min).