

Product Name: RIP Rabbit Monoclonal Antibody**Catalog #: AMRe21588**

For research use only.

Summary

Description	Recombinant rabbit monoclonal antibody
Host	Rabbit
Application	WB,IHC,ICC/IF,ELISA,IP
Reactivity	Human
Conjugation	Unconjugated
Modification	Unmodified
Isotype	IgG,Kappa
Clonality	Monoclonal
Form	Liquid
Concentration	0.3mg/ml. The concentration of this product may be batch-dependent.
Storage	Aliquot and store at -20°C (valid for 12 months). Avoid freeze/thaw cycles.
Shipping	Ice bags
Buffer	PBS, 50% glycerol, 0.05% Proclin 300, 0.05%protective protein
Purification	Protein A

Application

Dilution Ratio	WB 1:1000-1:5000,IHC 1:200-1:1000,ICC/IF 1:200-1:1000,ELISA 1:5000-1:20000,IP 1:50-1:200
Molecular Weight	Calculated MW:76kD;Observed MW:76kD

Antigen Information

Gene Name	RIPK1
Alternative Names	RIP RIP1
Gene ID	8737.0
SwissProt ID	Q13546
Immunogen	Recombinant protein of human RIP

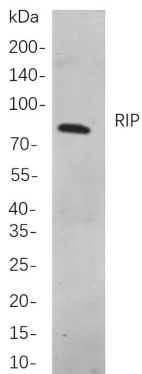
Background

Cell localization:Cytoplasmic, Membranous.catalytic activity:ATP + a protein = ADP + a phosphoprotein.,function:Promotes apoptosis and activation of NF-kappa-B. Required for TNFRSF1A mediated activation of NF-kappa-B.,PTM:Autophosphorylated on serine and threonine residues.,PTM:Proteolytically cleaved by caspase-8 during TNF-induced

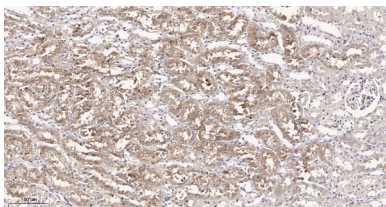
apoptosis. Cleavage abolishes NF-kappa-B activation and enhances pro-apoptotic signaling through the TRADD-FADD interaction.,similarity:Belongs to the protein kinase superfamily. TKL Ser/Thr protein kinase family.,similarity:Contains 1 death domain.,similarity:Contains 1 protein kinase domain.,subunit:Binds to the death domain of TNFRSF6 and TRADD. Is recruited by TRADD to TNFRSF1A in a TNF-dependent process. Binds RIPK3, UBCE7IP1 isoform 3 (ZIN), EGFR, IKBKG, TRAF1, TRAF2 and TRAF3. Interacts with BNLF1. Interacts with SQSTM1 upon TNF-alpha stimulation. May interact with MAVS/IPS1.,

Research Area

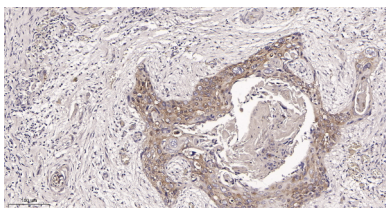
Image Data



Western blot analysis of lysates from HEK293 cells, using RIP Rabbit mAb. The HRP-conjugated Goat anti-Rabbit IgG antibody was used to detect the antibody.



Immunohistochemical analysis of paraffin-embedded Rat kidney tissue. 1, RIP Rabbit Monoclonal Antibody was diluted at 1:200(4°C,overnight). 2, EDTA pH 9.0 was used for antibody retrieval(>98°C,20min). 3,Secondary antibody was diluted at 1:200(room temperature, 30min).



Immunohistochemical analysis of paraffin-embedded human cervical cancer tissue. 1, RIP Rabbit Monoclonal Antibody was diluted at 1:200(4°C,overnight). 2, EDTA pH 9.0 was used for antibody retrieval(>98°C,20min). 3,Secondary antibody was diluted at 1:200(room temperature, 30min).