

Product Name: Actin (pan) Rabbit Monoclonal Antibody
Catalog #: AMRe21586



Summary

Production Name	Actin (pan) Rabbit Monoclonal Antibody
Description	Rabbit Monoclonal Antibody
Host	Rabbit
Application	WB,IHC,IF,IP,ELISA
Reactivity	Human,Mouse,Rat

Performance

Conjugation	Unconjugated
Modification	Unmodified
Isotype	IgG,Kappa
Clonality	Monoclonal
Form	Liquid
Storage	Store at 4°C short term. Aliquot and store at -20°C long term. Avoid freeze/thaw cycles.
Buffer	PBS, 50% glycerol, 0.05% Proclin 300, 0.05%protective protein
Purification	Protein A

Immunogen

Gene Name	ACTC1 Actin, alpha cardiac muscle 1;Alpha-cardiac actin;ACTC;Actin, alpha skeletal muscle;Alpha-actin-1;ACTA1;Actin, aortic smooth muscle;Alpha-actin-2;ACTA2;ACTSA,
Alternative Names	ACTVS;Actin, cytoplasmic 1;Beta-actin;ACTB;Actin, cytoplasmic 2;Gamma-actin;ACTG1;ACTG;Actin, gamma-enteric smooth muscle;Alpha-actin-3;Gamma-2-actin;Smooth muscle gamma-actin;ACTA3, ACTL3, ACTSG;ACTG2
Gene ID	70;58;59;60;71;72;
SwissProt ID	P62736;P68032;P60709;P63261;P68133;P63267.

Application

Dilution Ratio	IHC 1:200-1000;WB 1:1000-5000;IF 1:200-1000;ELISA 1:5000-20000;IP 1:50-200
Molecular Weight	Calculated MW:42kD;Observed MW:42kD

Product Name: Actin (pan) Rabbit Monoclonal Antibody
Catalog #: AMRe21586

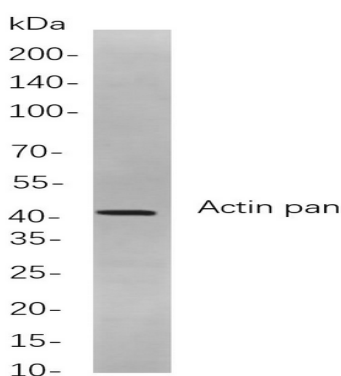


Background

Cell localization: Cytoplasmic, Membranous. The protein encoded by this gene belongs to the actin family of proteins, which are highly conserved proteins that play a role in cell motility, structure and integrity. Alpha, beta and gamma actin isoforms have been identified, with alpha actins being a major constituent of the contractile apparatus, while beta and gamma actins are involved in the regulation of cell motility. This actin is an alpha actin that is found in skeletal muscle. Defects in this gene cause aortic aneurysm familial thoracic type 6. Multiple alternatively spliced variants, encoding the same protein, have been identified. [provided by RefSeq, Nov 2008],

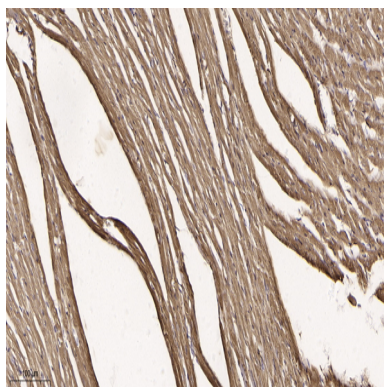
Research Area

Image Data



Western blot analysis of lysates from C6

cells, using Actin pan Rabbit mAb. The HRP-conjugated Goat anti-Rabbit IgG antibody was used to detect the antibody.

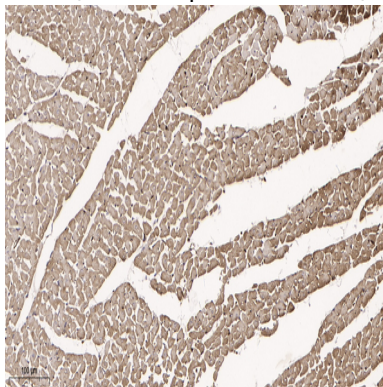


Immunohistochemical analysis of paraffin-embedded mouse heart muscle tissue. 1, primary Antibody was diluted at 1:200 (4°C, overnight). 2, EDTA pH 9.0 was used for antibody retrieval (>98°C, 20 min). 3, Secondary antibody was diluted at

Product Name: Actin (pan) Rabbit Monoclonal Antibody
Catalog #: AMRe21586

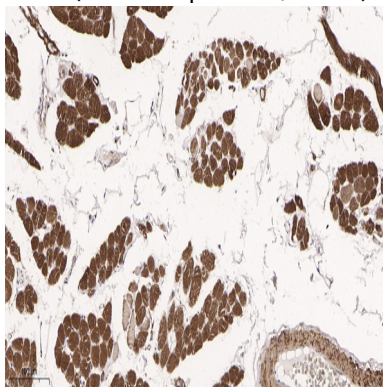


1:200(room temperature, 30min).



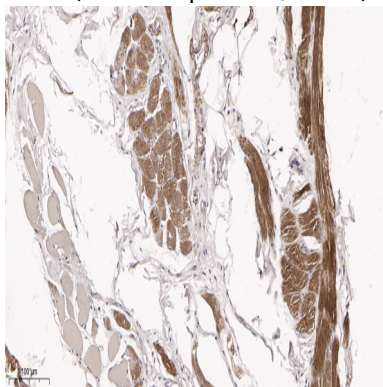
Immunohistochemical analysis of paraffin-embedded rat heart muscle tissue. 1, primary Antibody was diluted at 1:200(4°C,overnight). 2, EDTA pH 9.0 was used for antibody retrieval(>98°C,20min). 3,Secondary antibody was diluted at

1:200(room temperature, 30min).



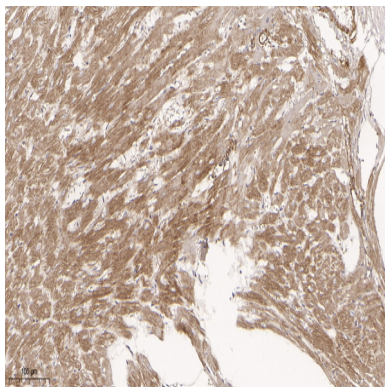
Immunohistochemical analysis of paraffin-embedded skeletal muscle tissue. 1, primary Antibody was diluted at 1:200(4°C,overnight). 2, EDTA pH 9.0 was used for antibody retrieval(>98°C,20min). 3,Secondary antibody was diluted at

1:200(room temperature, 30min).

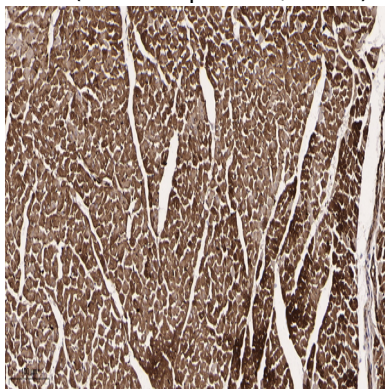


Immunohistochemical analysis of paraffin-embedded human skeletal muscle tissue. 1, primary Antibody was diluted at 1:200(4°C,overnight). 2, EDTA pH 9.0 was used for antibody retrieval(>98°C,20min). 3,Secondary antibody was diluted at 1:200(room temperature, 30min).

Product Name: Actin (pan) Rabbit Monoclonal Antibody
Catalog #: AMRe21586



Immunohistochemical analysis of paraffin-embedded mouse heart tissue. 1, primary Antibody was diluted at 1:200(4°C,overnight). 2, EDTA pH 9.0 was used for antibody retrieval(>98°C,20min). 3,Secondary antibody was diluted at 1:200(room temperature, 30min).



Immunohistochemical analysis of paraffin-embedded rat heart tissue. 1, primary Antibody was diluted at 1:200(4°C,overnight). 2, EDTA pH 9.0 was used for antibody retrieval(>98°C,20min). 3,Secondary antibody was diluted at 1:200(room temperature, 30min).

Note

For research use only.