

Product Name: EAAT1 Rabbit Monoclonal Antibody
Catalog #: AMRe21573



Summary

Production Name	EAAT1 Rabbit Monoclonal Antibody
Description	Rabbit Monoclonal Antibody
Host	Rabbit
Application	WB,IHC,IF,IP,ELISA
Reactivity	Human,Mouse,Rat

Performance

Conjugation	Unconjugated
Modification	Unmodified
Isotype	IgG,Kappa
Clonality	Monoclonal
Form	Liquid
Storage	Store at 4°C short term. Aliquot and store at -20°C long term. Avoid freeze/thaw cycles.
Buffer	PBS, 50% glycerol, 0.05% Proclin 300, 0.05%protective protein
Purification	Protein A

Immunogen

Gene Name	SLC1A3
Alternative Names	SLC1A3;EAAT1;GLAST;GLAST1;Excitatory amino acid transporter 1;Sodium-dependent glutamate/aspartate transporter 1;GLAST-1;Solute carrier family 1 member 3
Gene ID	6507.0
SwissProt ID	P43003.

Application

Dilution Ratio	IHC 1:200-1000;WB 1:500-2000;IF 1:200-1000;ELISA 1:5000-20000;IP 1:50-200
Molecular Weight	Calculated MW:60kD;Observed MW:59kD

Background

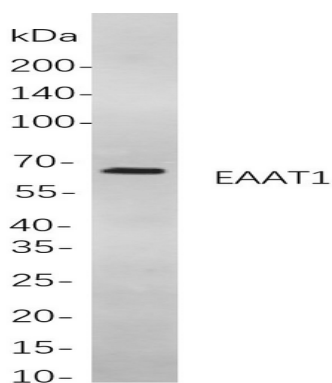
Product Name: EAAT1 Rabbit Monoclonal Antibody
Catalog #: AMRe21573



Cell localization: Cell membrane. This gene encodes a member of a high affinity glutamate transporter family. This gene functions in the termination of excitatory neurotransmission in central nervous system. Mutations are associated with episodic ataxia, Type 6. Alternative splicing results in multiple transcript variants. [provided by RefSeq, Feb 2014],

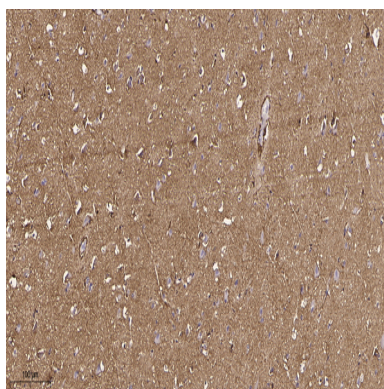
Research Area

Image Data



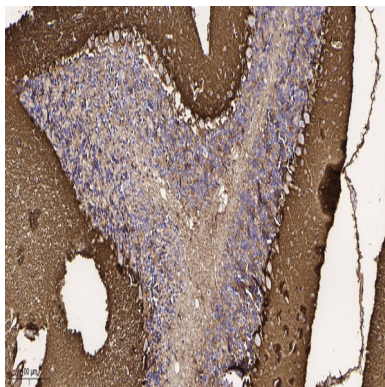
Western blot analysis of lysates from U-87MG

cells, using EAAT1 Rabbit mAb. The HRP-conjugated Goat anti-Rabbit IgG antibody was used to detect the antibody.

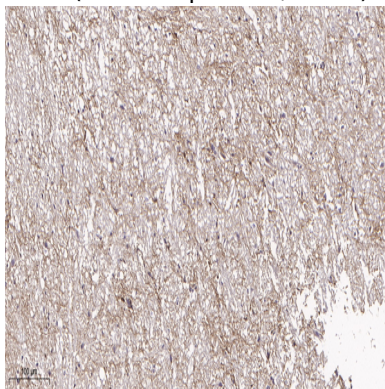


Immunohistochemical analysis of paraffin-embedded human brain tissue. 1, primary Antibody was diluted at 1:200 (4°C, overnight). 2, EDTA pH 9.0 was used for antibody retrieval (>98°C, 20min). 3, Secondary antibody was diluted at 1:200 (room temperature, 30min).

Product Name: EAAT1 Rabbit Monoclonal Antibody
Catalog #: AMRe21573



Immunohistochemical analysis of paraffin-embedded mouse brain tissue. 1, primary Antibody was diluted at 1:200(4°C,overnight). 2, EDTA pH 9.0 was used for antibody retrieval(>98°C,20min). 3,Secondary antibody was diluted at 1:200(room temperature, 30min).



Immunohistochemical analysis of paraffin-embedded rat brain tissue. 1, primary Antibody was diluted at 1:200(4°C,overnight). 2, EDTA pH 9.0 was used for antibody retrieval(>98°C,20min). 3,Secondary antibody was diluted at 1:200(room temperature, 30min).

Note

For research use only.