

Product Name: EEA1 Rabbit Monoclonal Antibody**Catalog #: AMRe21570**

For research use only.

Summary

Description	Recombinant rabbit monoclonal antibody
Host	Rabbit
Application	WB,IHC,ICC/IF,ELISA,IP
Reactivity	Human,Mouse,Rat
Conjugation	Unconjugated
Modification	Unmodified
Isotype	IgG,Kappa
Clonality	Monoclonal
Form	Liquid
Concentration	0.3mg/ml. The concentration of this product may be batch-dependent.
Storage	Aliquot and store at -20°C (valid for 12 months). Avoid freeze/thaw cycles.
Shipping	Ice bags
Buffer	PBS, 50% glycerol, 0.05% Proclin 300, 0.05%protective protein
Purification	Protein A

Application

Dilution Ratio	WB 1:1000-1:5000,IHC 1:100-1:200,ICC/IF 1:200-1:1000,ELISA 1:5000-1:20000,IP 1:50-1:200
Molecular Weight	Calculated MW:162kD;Observed MW:162kD

Antigen Information

Gene Name	EEA1
Alternative Names	EEA1;ZFVVE2;Early endosome antigen 1;Endosome-associated protein p162;Zinc finger FYVE domain-containing protein 2
Gene ID	8411.0
SwissProt ID	Q15075
Immunogen	A synthetic peptide of human EEA1

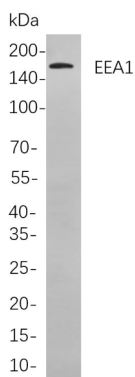
Background

Cell localization:Cytoplasm.disease:Antibodies against EEA1 are found in sera from patients with subacute cutaneous lupus erythematosus and other autoimmune diseases.,domain:The FYVE-type zinc finger domain mediates interactions with

phosphatidylinositol 3-phosphate.,function: Binds phospholipid vesicles containing phosphatidylinositol 3-phosphate and participates in endosomal trafficking.,similarity: Contains 1 C2H2-type zinc finger.,similarity: Contains 1 FYVE-type zinc finger.,subunit: Homodimer. Binds STX6. Binds RAB5A, RAB5B, RAB5C and RAB22A that have been activated by GTP-binding.,

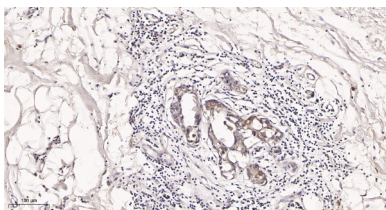
Research Area

Image Data



Western blot analysis of lysates from C6

cells, using EEA1 Rabbit mAb. The HRP-conjugated Goat anti-Rabbit IgG antibody was used to detect the antibody.



Immunohistochemical analysis of paraffin-embedded Human breast ductal cancer tissue. 1, EEA1 Rabbit Monoclonal Antibody was diluted at 1:200(4°C, overnight). 2, EDTA pH 9.0 was used for antibody retrieval(>98°C, 20min). 3, Secondary antibody was diluted at 1:200(room temperature, 30min).