
Product Name: Lactate Dehydrogenase Rabbit Monoclonal Antibody**Catalog #: AMRe21569**

For research use only.

Summary

Description	Recombinant rabbit monoclonal antibody
Host	Rabbit
Application	WB,IHC,ICC/IF,ELISA,IP
Reactivity	Human,Mouse,Rat
Conjugation	Unconjugated
Modification	Unmodified
Isotype	IgG,Kappa
Clonality	Monoclonal
Form	Liquid
Concentration	0.3mg/ml. The concentration of this product may be batch-dependent.
Storage	Aliquot and store at -20°C (valid for 12 months). Avoid freeze/thaw cycles.
Shipping	Ice bags
Buffer	PBS, 50% glycerol, 0.05% Proclin 300, 0.05%protective protein
Purification	Protein A

Application

Dilution Ratio	WB 1:1000-1:5000,IHC 1:1000-1:3000,ICC/IF 1:200-1:1000,ELISA 1:5000-1:20000,IP 1:50-1:200
Molecular Weight	Calculated MW:37kD;Observed MW:37kD

Antigen Information

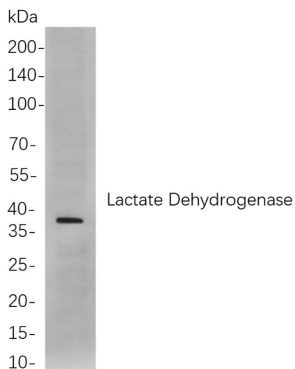
Gene Name	LDHA LDHA;PIG19;LDHB;LDHC;LDH3;LDHX;L-lactate dehydrogenase A chain;LDH-A;Cell proliferation-inducing gene 19 protein;LDH muscle subunit;LDH-M;Renal carcinoma antigen
Alternative Names	NY-REN-59;L-lactate dehydrogenase B chain;LDH-B;LDH heart subunit;LDH-H;Renal carcinoma antigen NY-REN-46;L-lactate dehydrogenase C chain;LDH-C;Cancer/testis antigen 32;CT32;LDH testis subunit;LDH-X;
Gene ID	3939.0
SwissProt ID	P00338;P07195;P07864;
Immunogen	

Background

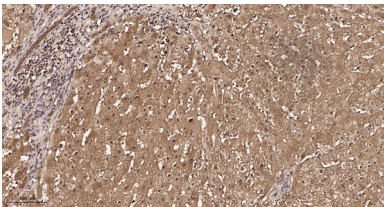
Cell localization: Cytoplasmic, Membranous. The protein encoded by this gene catalyzes the conversion of L-lactate and NAD to pyruvate and NADH in the final step of anaerobic glycolysis. The protein is found predominantly in muscle tissue and belongs to the lactate dehydrogenase family. Mutations in this gene have been linked to exertional myoglobinuria. Multiple transcript variants encoding different isoforms have been found for this gene. The human genome contains several non-transcribed pseudogenes of this gene. [provided by RefSeq, Sep 2008],

Research Area

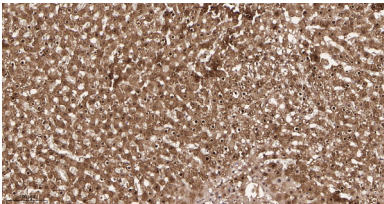
Image Data



Western blot analysis of lysates from HeLa cells, using Lactate Dehydrogenase Rabbit mAb. The HRP-conjugated Goat anti-Rabbit IgG antibody was used to detect the antibody.



Immunohistochemical analysis of paraffin-embedded Human liver tissue. 1, Lactate Dehydrogenase Rabbit Monoclonal Antibody was diluted at 1:200(4°C, overnight). 2, EDTA pH 9.0 was used for antibody retrieval(>98°C, 20min). 3, Secondary antibody was diluted at 1:200(room temperature, 30min).



Immunohistochemical analysis of paraffin-embedded Rat liver tissue. 1, Lactate Dehydrogenase Rabbit Monoclonal Antibody was diluted at 1:200(4°C, overnight). 2, EDTA pH 9.0 was used for antibody retrieval(>98°C, 20min). 3, Secondary antibody was diluted at 1:200(room temperature, 30min).