

Product Name: Glutaminase C Rabbit Monoclonal Antibody**Catalog #: AMRe21563**

For research use only.

Summary

Description	Recombinant rabbit monoclonal antibody
Host	Rabbit
Application	WB,IHC,ICC/IF,ELISA,IP
Reactivity	Human,Mouse,Rat
Conjugation	Unconjugated
Modification	Unmodified
Isotype	IgG,Kappa
Clonality	Monoclonal
Form	Liquid
Concentration	0.3mg/ml. The concentration of this product may be batch-dependent.
Storage	Aliquot and store at -20°C (valid for 12 months). Avoid freeze/thaw cycles.
Shipping	Ice bags
Buffer	PBS, 50% glycerol, 0.05% Proclin 300, 0.05%protective protein
Purification	Protein A

Application

Dilution Ratio	WB 1:1000-1:5000,IHC 1:200-1:1000,ICC/IF 1:200-1:1000,ELISA 1:5000-1:20000,IP 1:50-1:200
Molecular Weight	Calculated MW:68kD;Observed MW:55-65kD

Antigen Information

Gene Name	GLS
Alternative Names	GLS1 KIAA0838
Gene ID	2744.0
SwissProt ID	O94925
Immunogen	A synthetic peptide of human Glutaminase

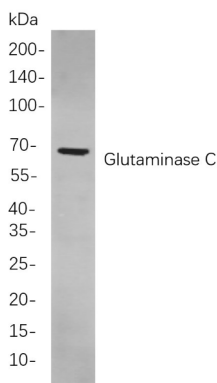
Background

Cell localization:Cytoplasm.This gene encodes the K-type mitochondrial glutaminase. The encoded protein is an phosphate-activated amidohydrolase that catalyzes the hydrolysis of glutamine to glutamate and ammonia. This protein is primarily expressed in the brain and kidney plays an essential role in generating energy for metabolism, synthesizing the brain

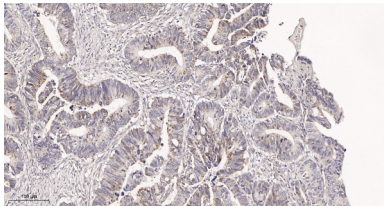
neurotransmitter glutamate and maintaining acid-base balance in the kidney. Alternate splicing results in multiple transcript variants. [provided by RefSeq, Jan 2012],

Research Area

Image Data



Western blot analysis of lysates from HeLa cells, using Glutaminase C Rabbit mAb. The HRP-conjugated Goat anti-Rabbit IgG antibody was used to detect the antibody.



Immunohistochemical analysis of paraffin-embedded human colon carcinoma tissue. 1, Glutaminase C Rabbit Monoclonal Antibody was diluted at 1:200(4°C,overnight). 2, EDTA pH 9.0 was used for antibody retrieval(>98°C,20min). 3,Secondary antibody was diluted at 1:200(room temperature, 30min).