
Product Name: Polycomb Protein SUZ12 Rabbit Monoclonal Antibody**Catalog #: AMRe21550**

For research use only.

Summary

Description	Recombinant rabbit monoclonal antibody
Host	Rabbit
Application	WB,IHC,ICC/IF,ELISA,IP
Reactivity	Human,Mouse,Rat
Conjugation	Unconjugated
Modification	Unmodified
Isotype	IgG,Kappa
Clonality	Monoclonal
Form	Liquid
Concentration	0.3mg/ml. The concentration of this product may be batch-dependent.
Storage	Aliquot and store at -20°C (valid for 12 months). Avoid freeze/thaw cycles.
Shipping	Ice bags
Buffer	PBS, 50% glycerol, 0.05% Proclin 300, 0.05%protective protein
Purification	Protein A

Application

Dilution Ratio	WB 1:1000-1:5000,IHC 1:200-1:1000,ICC/IF 1:200-1:1000,ELISA 1:5000-1:20000,IP 1:50-1:200
Molecular Weight	Calculated MW:83kD;Observed MW:83kD

Antigen Information

Gene Name	SUZ12
Alternative Names	SUZ12;CHET9;JAZ1;KIAA0160;Polycomb protein SUZ12;Chromatin precipitated E2F target 9 protein;ChET 9 protein;Joined to JAZF1 protein;Suppressor of zeste 12 protein homolog
Gene ID	23512.0
SwissProt ID	Q15022
Immunogen	A synthetic peptide of human SUZ12

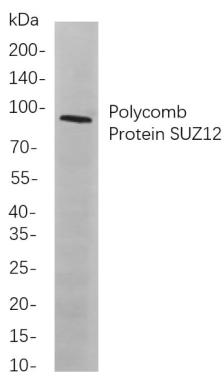
Background

Cell localization:Nucleus.This zinc finger gene has been identified at the breakpoints of a recurrent chromosomal translocation reported in endometrial stromal sarcoma. Recombination of these breakpoints results in the fusion of this gene and JAZF1. The

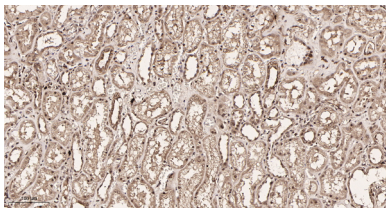
protein encoded by this gene contains a zinc finger domain in the C terminus of the coding region. [provided by RefSeq, Jul 2009],

Research Area

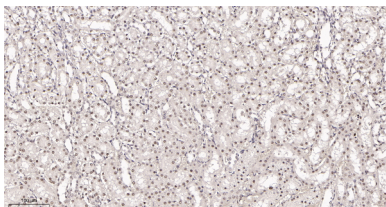
Image Data



Western blot analysis of lysates from A549 cells, using Polycomb Protein SUZ12 Rabbit mAb. The HRP-conjugated Goat anti-Rabbit IgG antibody was used to detect the antibody.



Immunohistochemical analysis of paraffin-embedded human kidney tissue. 1, Polycomb Protein SUZ12 Rabbit Monoclonal Antibody was diluted at 1:200(4°C,overnight). 2, EDTA pH 9.0 was used for antibody retrieval(>98°C,20min). 3,Secondary antibody was diluted at 1:200(room temperature, 30min).



Immunohistochemical analysis of paraffin-embedded rat kidney tissue. 1, Polycomb Protein SUZ12 Rabbit Monoclonal Antibody was diluted at 1:200(4°C,overnight). 2, EDTA pH 9.0 was used for antibody retrieval(>98°C,20min). 3,Secondary antibody was diluted at 1:200(room temperature, 30min).