
Product Name: CTGF Rabbit Monoclonal Antibody**Catalog #: AMRe21549**

For research use only.

Summary

Description	Recombinant rabbit monoclonal antibody
Host	Rabbit
Application	WB,ELISA,IP
Reactivity	Human,Mouse,Rat
Conjugation	Unconjugated
Modification	Unmodified
Isotype	IgG,Kappa
Clonality	Monoclonal
Form	Liquid
Concentration	0.3mg/ml. The concentration of this product may be batch-dependent.
Storage	Aliquot and store at -20°C (valid for 12 months). Avoid freeze/thaw cycles.
Shipping	Ice bags
Buffer	PBS, 50% glycerol, 0.05% Proclin 300, 0.05%protective protein
Purification	Protein A

Application

Dilution Ratio	WB 1:500-1:2000,ELISA 1:5000-1:20000,IP 1:50-1:200
Molecular Weight	Calculated MW:38kD;Observed MW:38kD

Antigen Information

Gene Name	CTGF
Alternative Names	Connective tissue growth factor;CCN family member 2;Hypertrophic chondrocyte-specific protein 24;Insulin-like growth factor-binding protein 8;IBP-8;IGF-binding protein 8;IGFBP-8;
Gene ID	1490.0
SwissProt ID	P29279
Immunogen	Recombinant protein of human CTGF

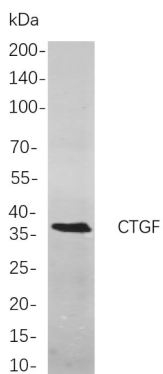
Background

Cell localization:Secreted.The protein encoded by this gene is a mitogen that is secreted by vascular endothelial cells. The encoded protein plays a role in chondrocyte proliferation and differentiation, cell adhesion in many cell types, and is related to

platelet-derived growth factor. Certain polymorphisms in this gene have been linked with a higher incidence of systemic sclerosis. [provided by RefSeq, Nov 2009],

Research Area

Image Data



Western blot analysis of lysates from U-14 cells, using CTGF Rabbit mAb. The HRP-conjugated Goat anti-Rabbit IgG antibody was used to detect the antibody.