

**Product Name: Neurofilament heavy polypeptide Rabbit  
Monoclonal Antibody  
Catalog #: AMRe21532**

---

## Summary

<b>Production Name</b>	Neurofilament heavy polypeptide Rabbit Monoclonal Antibody
<b>Description</b>	Rabbit Monoclonal Antibody
<b>Host</b>	Rabbit
<b>Application</b>	WB,IHC,IF,IP,ELISA
<b>Reactivity</b>	Human,Mouse,Rat

## Performance

<b>Conjugation</b>	Unconjugated
<b>Modification</b>	Unmodified
<b>Isotype</b>	IgG,Kappa
<b>Clonality</b>	Monoclonal
<b>Form</b>	Liquid
<b>Storage</b>	Store at 4°C short term. Aliquot and store at -20°C long term. Avoid freeze/thaw cycles.
<b>Buffer</b>	PBS, 50% glycerol, 0.05% Proclin 300, 0.05% protective protein
<b>Purification</b>	Protein A

## Immunogen

<b>Gene Name</b>	NEFH
<b>Alternative Names</b>	NEFH;KIAA0845;NFH;Neurofilament heavy polypeptide;NF-H;200 kDa neurofilament protein;Neurofilament triplet H protein
<b>Gene ID</b>	4744.0
<b>SwissProt ID</b>	P12036.

## Application

<b>Dilution Ratio</b>	IHC 1:200-1:1000;WB 1:1000-1:5000;IF 1:200-1:1000;ELISA 1:5000-1:20000;IP 1:50-1:200,
<b>Molecular Weight</b>	Calculated MW:110kD;Observed MW:180-200kD

**Product Name: Neurofilament heavy polypeptide Rabbit  
Monoclonal Antibody  
Catalog #: AMRe21532**

---

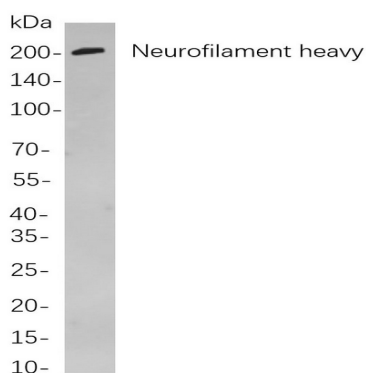


## Background

Cell localization: Cytoplasm. Neurofilaments are type IV intermediate filament heteropolymers composed of light, medium, and heavy chains. Neurofilaments comprise the axoskeleton and functionally maintain neuronal caliber. They may also play a role in intracellular transport to axons and dendrites. This gene encodes the heavy neurofilament protein. This protein is commonly used as a biomarker of neuronal damage and susceptibility to amyotrophic lateral sclerosis (ALS) has been associated with mutations in this gene. [provided by RefSeq, Oct 2008],

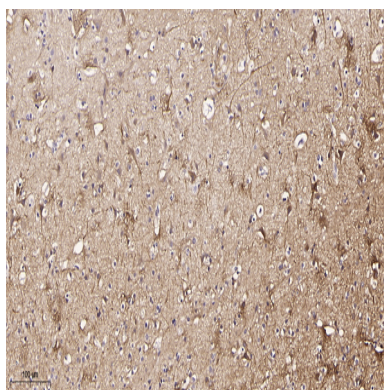
## Research Area

## Image Data



Western blot analysis of lysates from Mouse brain

cells, using Neurofilament heavy polypeptide Rabbit mAb. The HRP-conjugated Goat anti-Rabbit IgG antibody was used to detect the antibody.

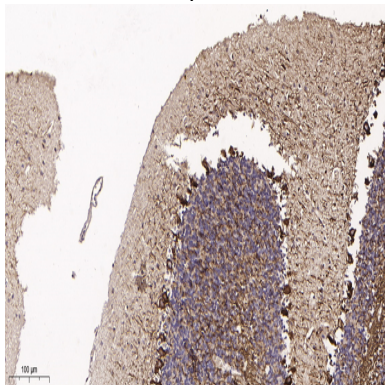


Immunohistochemical analysis of paraffin-embedded human brain tissue. 1, primary Antibody was diluted at

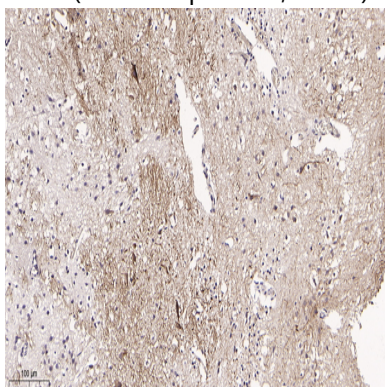
**Product Name: Neurofilament heavy polypeptide Rabbit  
Monoclonal Antibody  
Catalog #: AMRe21532**



1:200(4°C,overnight). 2, EDTA pH 9.0 was used for antibody retrieval(>98°C,20min). 3,Secondary antibody was diluted at 1:200(room temperature, 30min).



Immunohistochemical analysis of paraffin-embedded mouse brain tissue. 1, primary Antibody was diluted at 1:200(4°C,overnight). 2, EDTA pH 9.0 was used for antibody retrieval(>98°C,20min). 3,Secondary antibody was diluted at 1:200(room temperature, 30min).



Immunohistochemical analysis of paraffin-embedded rat brain tissue. 1, primary Antibody was diluted at 1:200(4°C,overnight). 2, EDTA pH 9.0 was used for antibody retrieval(>98°C,20min). 3,Secondary antibody was diluted at 1:200(room temperature, 30min).

**Note**

For research use only.