

Product Name: Cyclin D1 Rabbit Monoclonal Antibody
Catalog #: AMRe21529



Summary

Production Name	Cyclin D1 Rabbit Monoclonal Antibody
Description	Rabbit Monoclonal Antibody
Host	Rabbit
Application	WB,IHC,IF,IP,ELISA
Reactivity	Human,Mouse,Rat

Performance

Conjugation	Unconjugated
Modification	Unmodified
Isotype	IgG,Kappa
Clonality	Monoclonal
Form	Liquid
Storage	Store at 4°C short term. Aliquot and store at -20°C long term. Avoid freeze/thaw cycles.
Buffer	PBS, 50% glycerol, 0.05% Proclin 300, 0.05%protective protein
Purification	Protein A

Immunogen

Gene Name	CCND1
Alternative Names	CCND1;BCL1;PRAD1;G1/S-specific cyclin-D1;B-cell lymphoma 1 protein;BCL-1;BCL-1 oncogene;PRAD1 oncogene
Gene ID	595.0
SwissProt ID	P24385.

Application

Dilution Ratio	IHC 1:200-1:1000;WB 1:1000-1:5000;IF 1:200-1:1000;ELISA 1:5000-1:20000;IP 1:50-1:200,
Molecular Weight	Calculated MW:34kD;Observed MW:36kD

Product Name: Cyclin D1 Rabbit Monoclonal Antibody
Catalog #: AMRe21529

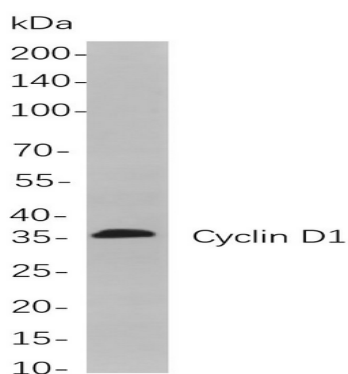


Background

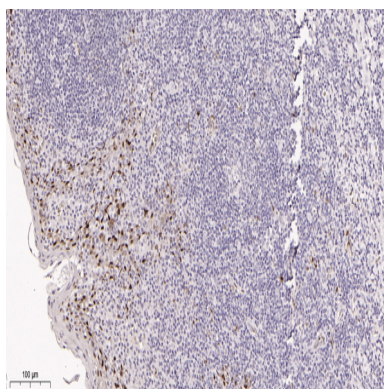
Cell localization:Nucleus.The protein encoded by this gene belongs to the highly conserved cyclin family, whose members are characterized by a dramatic periodicity in protein abundance throughout the cell cycle. Cyclins function as regulators of CDK kinases. Different cyclins exhibit distinct expression and degradation patterns which contribute to the temporal coordination of each mitotic event. This cyclin forms a complex with and functions as a regulatory subunit of CDK4 or CDK6, whose activity is required for cell cycle G1/S transition. This protein has been shown to interact with tumor suppressor protein Rb and the expression of this gene is regulated positively by Rb. Mutations, amplification and overexpression of this gene, which alters cell cycle progression, are observed frequently in a variety of tumors and may contribute to tumorigenesis. [provided by RefSeq, Jul 2008],

Research Area

Image Data



Western blot analysis of lysates from Mosue spleen cells, using Cyclin D1 Rabbit mAb. The HRP-conjugated Goat anti-Rabbit IgG antibody was used to detect the antibody.

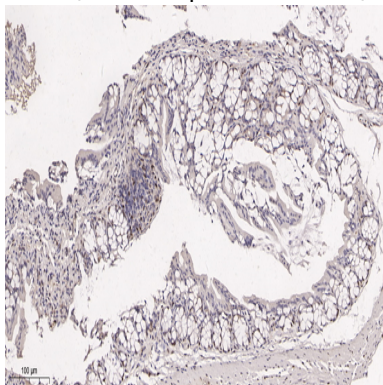


Immunohistochemical analysis of paraffin-embedded human tonsil tissue. 1, primary Antibody was diluted at 1:200(4°C,overnight). 2, EDTA pH 9.0 was used for antibody retrieval(>98°C,20min). 3,Secondary antibody was diluted at

Product Name: Cyclin D1 Rabbit Monoclonal Antibody
Catalog #: AMRe21529

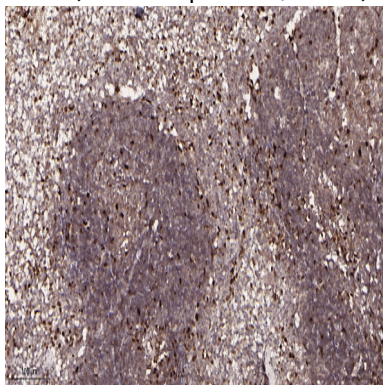


1:200(room temperature, 30min).



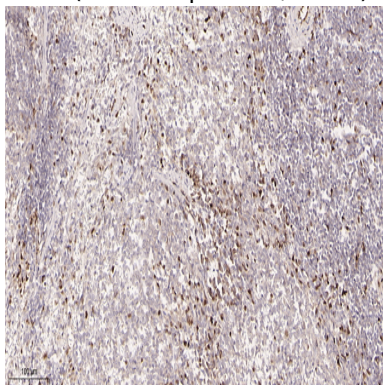
Immunohistochemical analysis of paraffin-embedded Mouse colon tissue. 1, primary Antibody was diluted at 1:200(4°C,overnight). 2, EDTA pH 9.0 was used for antibody retrieval(>98°C,20min). 3,Secondary antibody was diluted at

1:200(room temperature, 30min).



Immunohistochemical analysis of paraffin-embedded Mouse spleen tissue. 1, primary Antibody was diluted at 1:200(4°C,overnight). 2, EDTA pH 9.0 was used for antibody retrieval(>98°C,20min). 3,Secondary antibody was diluted at

1:200(room temperature, 30min).



Immunohistochemical analysis of paraffin-embedded Rat spleen tissue. 1, primary Antibody was diluted at 1:200(4°C,overnight). 2, EDTA pH 9.0 was used for antibody retrieval(>98°C,20min). 3,Secondary antibody was diluted at 1:200(room temperature, 30min).

Product Name: Cyclin D1 Rabbit Monoclonal Antibody
Catalog #: AMRe21529



Note

For research use only.