

---

**Product Name: GCLM Rabbit Monoclonal Antibody****Catalog #: AMRe21523**

For research use only.

**Summary**

<b>Description</b>	Recombinant rabbit monoclonal antibody
<b>Host</b>	Rabbit
<b>Application</b>	WB,IHC,IF,IP,ELISA
<b>Reactivity</b>	Human
<b>Conjugation</b>	Unconjugated
<b>Modification</b>	Unmodified
<b>Isotype</b>	IgG,Kappa
<b>Clonality</b>	Monoclonal
<b>Form</b>	Liquid
<b>Concentration</b>	0.3mg/ml. The concentration of this product may be batch-dependent.
<b>Storage</b>	Aliquot and store at -20°C (valid for 12 months). Avoid freeze/thaw cycles.
<b>Shipping</b>	Ice bags
<b>Buffer</b>	PBS, 50% glycerol, 0.05% Proclin 300, 0.05%protective protein
<b>Purification</b>	Protein A

**Application**

<b>Dilution Ratio</b>	IHC 1:200-1:1000;WB 1:2000-1:10000;IF 1:200-1:1000;ELISA 1:5000-1:20000;IP 1:50-1:200;
<b>Molecular Weight</b>	Calculated MW:31kD;Observed MW:31kD

**Antigen Information**

<b>Gene Name</b>	GCLM GCLM;GLCLR;Glutamate--cysteine ligase regulatory subunit;GCS light chain;Gamma-ECS
<b>Alternative Names</b>	regulatory subunit;Gamma-glutamylcysteine synthetase regulatory subunit;Glutamate--cysteine ligase modifier subunit
<b>Gene ID</b>	2730.0
<b>SwissProt ID</b>	P48507
<b>Immunogen</b>	A synthetic peptide of human GCLM

**Background**

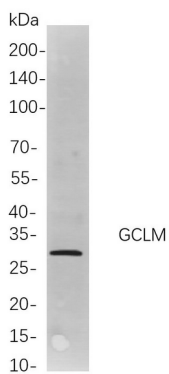
Cell localization:Cytoplasm.Glutamate-cysteine ligase, also known as gamma-glutamylcysteine synthetase, is the first rate

limiting enzyme of glutathione synthesis. The enzyme consists of two subunits, a heavy catalytic subunit and a light regulatory subunit. Gamma glutamylcysteine synthetase deficiency has been implicated in some forms of hemolytic anemia. Alternative splicing results in multiple transcript variants encoding different isoforms. [provided by RefSeq, Apr 2015],

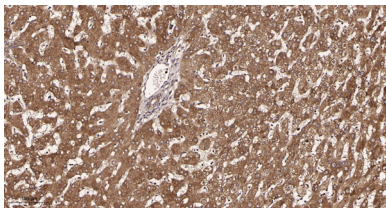
## Research Area

Neuroscience; Signal Transduction; Cell Biology; Metabolism

## Image Data



Western blot analysis of lysates from NIH-3T3 cells, using GCLM Rabbit mAb. The HRP-conjugated Goat anti-Rabbit IgG antibody was used to detect the antibody.



Immunohistochemical analysis of paraffin-embedded human liver tissue. 1, GCLM Rabbit Monoclonal Antibody was diluted at 1:200(4°C, overnight). 2, EDTA pH 9.0 was used for antibody retrieval(>98°C, 20min). 3, Secondary antibody was diluted at 1:200(room temperature, 30min).