

Product Name: p27 KIP 1 Rabbit Monoclonal Antibody
Catalog #: AMRe21522



Summary

Production Name	p27 KIP 1 Rabbit Monoclonal Antibody
Description	Rabbit Monoclonal Antibody
Host	Rabbit
Application	WB,IHC,IF,IP,ELISA
Reactivity	Human,Mouse,Rat

Performance

Conjugation	Unconjugated
Modification	Unmodified
Isotype	IgG,Kappa
Clonality	Monoclonal
Form	Liquid
Storage	Store at 4°C short term. Aliquot and store at -20°C long term. Avoid freeze/thaw cycles.
Buffer	PBS, 50% glycerol, 0.05% Proclin 300, 0.05%protective protein
Purification	Protein A

Immunogen

Gene Name	CDKN1B
Alternative Names	CDKN1B;KIP1;Cyclin-dependent kinase inhibitor 1B;Cyclin-dependent kinase inhibitor p27;p27Kip1
Gene ID	1027.0
SwissProt ID	P46527.

Application

Dilution Ratio	IHC 1:200-1:1000;WB 1:1000-1:5000;IF 1:200-1:1000;ELISA 1:5000-1:20000;IP 1:50-1:200,
Molecular Weight	Calculated MW:27kD;Observed MW:27kD

Product Name: p27 KIP 1 Rabbit Monoclonal Antibody
Catalog #: AMRe21522

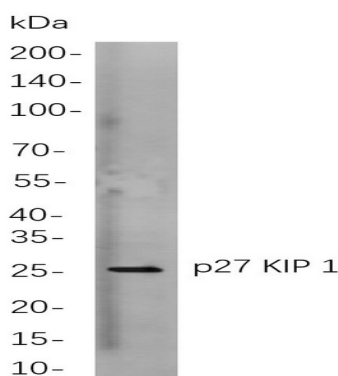


Background

Cell localization:Nucleus.This gene encodes a cyclin-dependent kinase inhibitor, which shares a limited similarity with CDK inhibitor CDKN1A/p21. The encoded protein binds to and prevents the activation of cyclin E-CDK2 or cyclin D-CDK4 complexes, and thus controls the cell cycle progression at G1. The degradation of this protein, which is triggered by its CDK dependent phosphorylation and subsequent ubiquitination by SCF complexes, is required for the cellular transition from quiescence to the proliferative state. Mutations in this gene are associated with multiple endocrine neoplasia type IV (MEN4). [provided by RefSeq, Apr 2014],

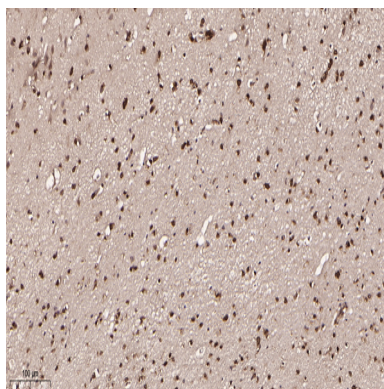
Research Area

Image Data



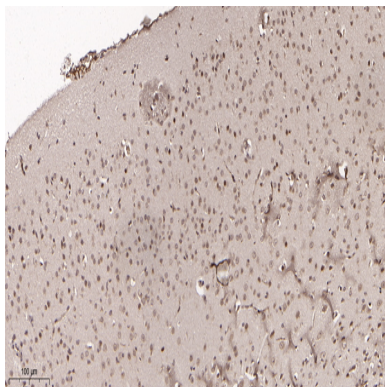
Western blot analysis of lysates from HeLa

cells, using p27 KIP 1 Rabbit mAb. The HRP-conjugated Goat anti-Rabbit IgG antibody was used to detect the antibody.

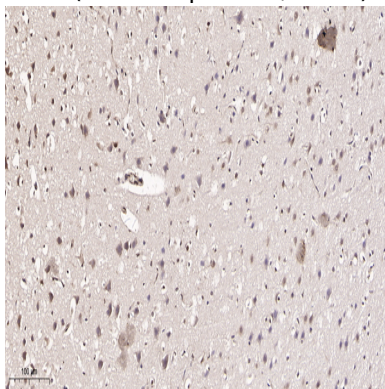


Immunohistochemical analysis of paraffin-embedded human brain tissue. 1, primary Antibody was diluted at 1:200(4°C,overnight). 2, EDTA pH 9.0 was used for antibody retrieval(>98°C,20min). 3,Secondary antibody was diluted at 1:200(room temperature, 30min).

Product Name: p27 KIP 1 Rabbit Monoclonal Antibody
Catalog #: AMRe21522



Immunohistochemical analysis of paraffin-embedded mouse brain tissue. 1, primary Antibody was diluted at 1:200(4°C,overnight). 2, EDTA pH 9.0 was used for antibody retrieval(>98°C,20min). 3,Secondary antibody was diluted at 1:200(room temperature, 30min).



Immunohistochemical analysis of paraffin-embedded rat brain tissue. 1, primary Antibody was diluted at 1:200(4°C,overnight). 2, EDTA pH 9.0 was used for antibody retrieval(>98°C,20min). 3,Secondary antibody was diluted at 1:200(room temperature, 30min).

Note

For research use only.