

Product Name: YTHDF1 Rabbit Monoclonal Antibody**Catalog #: AMRe21509**

For research use only.

Summary

Description	Recombinant rabbit monoclonal antibody
Host	Rabbit
Application	WB,IHC,ICC/IF,ELISA,IP
Reactivity	Human,Mouse,Rat
Conjugation	Unconjugated
Modification	Unmodified
Isotype	IgG,Kappa
Clonality	Monoclonal
Form	Liquid
Concentration	0.3mg/ml. The concentration of this product may be batch-dependent.
Storage	Aliquot and store at -20°C (valid for 12 months). Avoid freeze/thaw cycles.
Shipping	Ice bags
Buffer	PBS, 50% glycerol, 0.05% Proclin 300, 0.05%protective protein
Purification	Protein A

Application

Dilution Ratio	WB 1:1000-1:5000,IHC 1:200-1:1000,ICC/IF 1:200-1:1000,ELISA 1:5000-1:20000,IP 1:50-1:200
Molecular Weight	Calculated MW:61kD;Observed MW:70kD

Antigen Information

Gene Name	Ythdf1 C20orf21;DACA 1;DACA-1;Dermatomyositis associated with cancer putative autoantigen
Alternative Names	1;YTH domain family 1;YTH domain family member 1;YTH domain family protein 1;YTHD1;YTHD1_HUMAN;Ythdf1;
Gene ID	54915.0
SwissProt ID	Q9BYJ9
Immunogen	

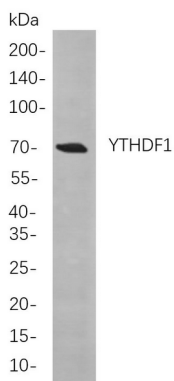
Background

Cell localization:Cytoplasm.Enables N6-methyladenosine-containing RNA binding activity and ribosome binding activity.

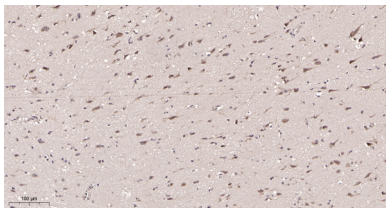
Involved in mRNA destabilization; positive regulation of translational initiation; and stress granule assembly. Located in P-body and cytoplasmic stress granule. [provided by Alliance of Genome Resources, Apr 2022]

Research Area

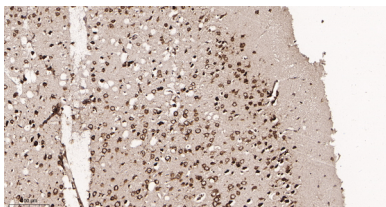
Image Data



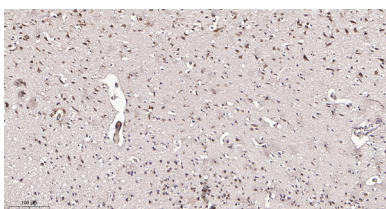
Western blot analysis of lysates from MCF7 cells, using YTHDF1 Rabbit mAb. The HRP-conjugated Goat anti-Rabbit IgG antibody was used to detect the antibody.



Immunohistochemical analysis of paraffin-embedded Human brain tissue. 1, YTHDF1 Rabbit Monoclonal Antibody was diluted at 1:200(4°C,overnight). 2, EDTA pH 9.0 was used for antibody retrieval(>98°C,20min). 3,Secondary antibody was diluted at 1:200(room temperature, 30min).



Immunohistochemical analysis of paraffin-embedded Mouse brain tissue. 1, YTHDF1 Rabbit Monoclonal Antibody was diluted at 1:200(4°C,overnight). 2, EDTA pH 9.0 was used for antibody retrieval(>98°C,20min). 3,Secondary antibody was diluted at 1:200(room temperature, 30min).



Immunohistochemical analysis of paraffin-embedded Rat brain tissue. 1, YTHDF1 Rabbit Monoclonal Antibody was diluted at 1:200(4°C,overnight). 2, EDTA pH 9.0 was used for antibody retrieval(>98°C,20min). 3,Secondary antibody was diluted at 1:200(room temperature, 30min).