

Product Name: Rab 5A Rabbit Monoclonal Antibody
Catalog #: AMRe21505



Summary

Production Name	Rab 5A Rabbit Monoclonal Antibody
Description	Rabbit Monoclonal Antibody
Host	Rabbit
Application	WB,IHC,IF,IP,ELISA
Reactivity	Human,Mouse,Rat

Performance

Conjugation	Unconjugated
Modification	Unmodified
Isotype	IgG,Kappa
Clonality	Monoclonal
Form	Liquid
Storage	Store at 4°C short term. Aliquot and store at -20°C long term. Avoid freeze/thaw cycles.
Buffer	PBS, 50% glycerol, 0.05% Proclin 300, 0.05%protective protein
Purification	Protein A

Immunogen

Gene Name	RAB5A
Alternative Names	RAB5A;RAB5;Ras-related protein Rab-5A
Gene ID	5868.0
SwissProt ID	P20339.

Application

Dilution Ratio	IHC 1:1000-1:4000;WB 1:1000-1:5000;IF 1:200-1:1000;ELISA 1:5000-1:20000;IP 1:50-1:200,
Molecular Weight	Calculated MW:24kD;Observed MW:24kD

Background

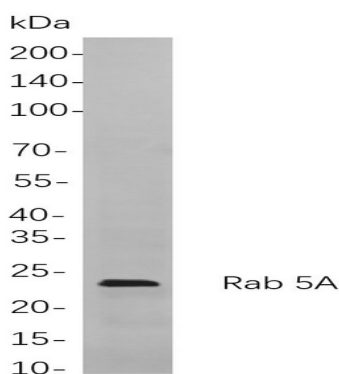
Product Name: Rab 5A Rabbit Monoclonal Antibody
Catalog #: AMRe21505



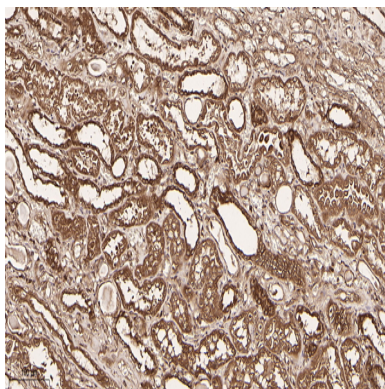
Cell localization: Cytoplasm, Membrane. enzyme regulation: Regulated by guanine nucleotide exchange factors (GEFs) which promote the exchange of bound GDP for free GTP. function: Required for the fusion of plasma membranes and early endosomes. similarity: Belongs to the small GTPase superfamily. Rab family. subcellular location: Enriched in stage I melanosomes. subunit: Binds EEA1. Interacts with RIN1 and GAPVD1, which regulate its pathway, probably by acting as a GEF. Interacts with ALS2CL, UNC84B, ZFYVE20 and RUFY1. Interacts with SGSM1 and SGSM3.

Research Area

Image Data

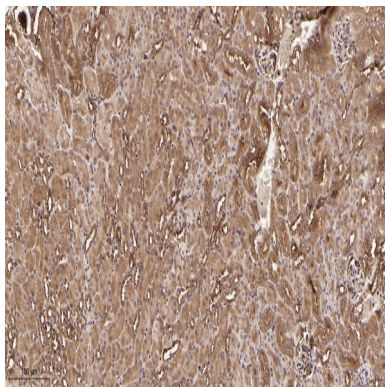


Western blot analysis of lysates from HepG2 cells, using Rab 5A Rabbit mAb. The HRP-conjugated Goat anti-Rabbit IgG antibody was used to detect the antibody.

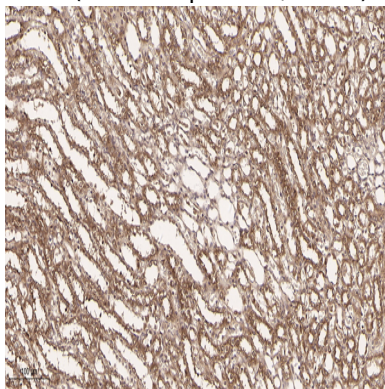


Immunohistochemical analysis of paraffin-embedded Human kidney tissue. 1, primary Antibody was diluted at 1:200(4°C, overnight). 2, EDTA pH 9.0 was used for antibody retrieval(>98°C, 20min). 3, Secondary antibody was diluted at 1:200(room temperature, 30min).

Product Name: Rab 5A Rabbit Monoclonal Antibody
Catalog #: AMRe21505



Immunohistochemical analysis of paraffin-embedded Mouse kidney tissue. 1, primary Antibody was diluted at 1:200(4°C,overnight). 2, EDTA pH 9.0 was used for antibody retrieval(>98°C,20min). 3,Secondary antibody was diluted at 1:200(room temperature, 30min).



Immunohistochemical analysis of paraffin-embedded Rat kidney tissue. 1, primary Antibody was diluted at 1:200(4°C,overnight). 2, EDTA pH 9.0 was used for antibody retrieval(>98°C,20min). 3,Secondary antibody was diluted at 1:200(room temperature, 30min).

Note

For research use only.