

Product Name: ROCK1 Rabbit Monoclonal Antibody**Catalog #: AMRe21502**

For research use only.

Summary

Description	Recombinant rabbit monoclonal antibody
Host	Rabbit
Application	WB,IHC,ICC/IF,ELISA,IP
Reactivity	Human,Mouse,Rat
Conjugation	Unconjugated
Modification	Unmodified
Isotype	IgG,Kappa
Clonality	Monoclonal
Form	Liquid
Concentration	0.3mg/ml. The concentration of this product may be batch-dependent.
Storage	Aliquot and store at -20°C (valid for 12 months). Avoid freeze/thaw cycles.
Shipping	Ice bags
Buffer	PBS, 50% glycerol, 0.05% Proclin 300, 0.05%protective protein
Purification	Protein A

Application

Dilution Ratio	WB 1:1000-1:5000,IHC 1:200-1:1000,ICC/IF 1:200-1:1000,ELISA 1:5000-1:20000,IP 1:50-1:200
Molecular Weight	Calculated MW:158kD;Observed MW:158kD

Antigen Information

Gene Name	ROCK1 ROCK1;Rho-associated protein kinase 1;Renal carcinoma antigen NY-REN-35;Rho-associated;coiled-coil-containing protein kinase 1;Rho-associated, coiled-coil-containing protein kinase I;ROCK-I;p160 ROCK-1;p160ROCK
Alternative Names	
Gene ID	6093.0
SwissProt ID	Q13464
Immunogen	A synthetic peptide of human ROCK1

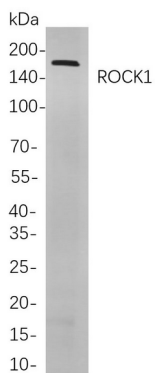
Background

Cell localization:Cytoplasm, Membrane.This gene encodes a protein serine/threonine kinase that is activated when bound to

the GTP-bound form of Rho. The small GTPase Rho regulates formation of focal adhesions and stress fibers of fibroblasts, as well as adhesion and aggregation of platelets and lymphocytes by shuttling between the inactive GDP-bound form and the active GTP-bound form. Rho is also essential in cytokinesis and plays a role in transcriptional activation by serum response factor. This protein, a downstream effector of Rho, phosphorylates and activates LIM kinase, which in turn, phosphorylates cofilin, inhibiting its actin-depolymerizing activity. A pseudogene, related to this gene, is also located on chromosome 18. [provided by RefSeq, Aug 2015],

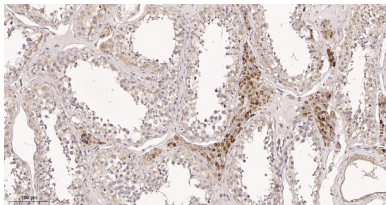
Research Area

Image Data



Western blot analysis of lysates from C6

cells, using ROCK1 Rabbit mAb. The HRP-conjugated Goat anti-Rabbit IgG antibody was used to detect the antibody.



Immunohistochemical analysis of paraffin-embedded Human testis tissue. 1, ROCK1 Rabbit Monoclonal Antibody was diluted at 1:200(4°C,overnight). 2, EDTA pH 9.0 was used for antibody retrieval(>98°C,20min). 3,Secondary antibody was diluted at 1:200(room temperature, 30min).