
Product Name: PGC1 β Rabbit Monoclonal Antibody**Catalog #: AMRe21495**

For research use only.

Summary

Description	Recombinant rabbit monoclonal antibody
Host	Rabbit
Application	WB,IP,ELISA
Reactivity	Human,Mouse,Rat
Conjugation	Unconjugated
Modification	Unmodified
Isotype	IgG,Kappa
Clonality	Monoclonal
Form	Liquid
Concentration	0.3mg/ml. The concentration of this product may be batch-dependent.
Storage	Aliquot and store at -20°C (valid for 12 months). Avoid freeze/thaw cycles.
Shipping	Ice bags
Buffer	PBS, 50% glycerol, 0.05% Proclin 300, 0.05%protective protein
Purification	Protein A

Application

Dilution Ratio	WB 1:1000-1:5000;ELISA 1:5000-1:20000;IP 1:50-1:200,
Molecular Weight	Calculated MW:113kD;Observed MW:113kD

Antigen Information

Gene Name	PPARGC1B
Alternative Names	
Gene ID	133522.0
SwissProt ID	Q86YN6
Immunogen	A synthetic peptide of human PGC1 beta

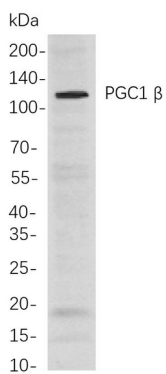
Background

Cell localization:Nucleus.The protein encoded by this gene stimulates the activity of several transcription factors and nuclear receptors, including estrogen receptor alpha, nuclear respiratory factor 1, and glucocorticoid receptor. The encoded protein may be involved in fat oxidation, non-oxidative glucose metabolism, and the regulation of energy expenditure. This protein is

downregulated in prediabetic and type 2 diabetes mellitus patients. Certain allelic variations in this gene increase the risk of the development of obesity. Three transcript variants encoding different isoforms have been found for this gene. [provided by RefSeq, Mar 2010],

Research Area

Image Data



Western blot analysis of lysates from MCF7 cells, using PGC1 β Rabbit mAb. The HRP-conjugated Goat anti-Rabbit IgG antibody was used to detect the antibody.