
Product Name: KAP1 Rabbit Monoclonal Antibody**Catalog #: AMRe21494**

For research use only.

Summary

Description	Recombinant rabbit monoclonal antibody
Host	Rabbit
Application	WB,IHC,ICC/IF,ELISA,IP
Reactivity	Human,Mouse,Rat
Conjugation	Unconjugated
Modification	Unmodified
Isotype	IgG,Kappa
Clonality	Monoclonal
Form	Liquid
Concentration	0.3mg/ml. The concentration of this product may be batch-dependent.
Storage	Aliquot and store at -20°C (valid for 12 months). Avoid freeze/thaw cycles.
Shipping	Ice bags
Buffer	PBS, 50% glycerol, 0.05% Proclin 300, 0.05%protective protein
Purification	Protein A

Application

Dilution Ratio	WB 1:1000-1:5000,IHC 1:200-1:1000,ICC/IF 1:200-1:1000,ELISA 1:5000-1:20000,IP 1:50-1:200
Molecular Weight	Calculated MW:89kD;Observed MW:110kD

Antigen Information

Gene Name	KAP1 Transcription intermediary factor 1-beta;TIF1-beta;E3 SUMO-protein ligase TRIM28;KRAB-
Alternative Names	associated protein 1;KAP-1;KRAB-interacting protein 1;KRIP-1;Nuclear corepressor KAP-1;RING finger protein 96;Tripartite motif-containing protein 28;
Gene ID	10155.0
SwissProt ID	Q13263
Immunogen	A synthetic peptide corresponding to target protein

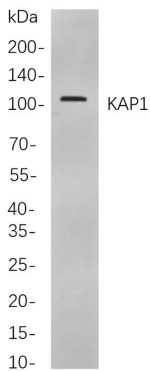
Background

Cell localization:Nucleus.The protein encoded by this gene mediates transcriptional control by interaction with the Kruppel-

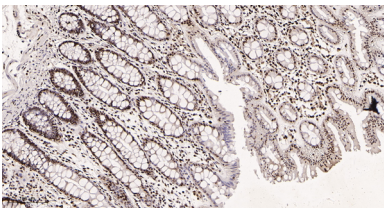
associated box repression domain found in many transcription factors. The protein localizes to the nucleus and is thought to associate with specific chromatin regions. The protein is a member of the tripartite motif family. This tripartite motif includes three zinc-binding domains, a RING, a B-box type 1 and a B-box type 2, and a coiled-coil region. [provided by RefSeq, Jul 2008],

Research Area

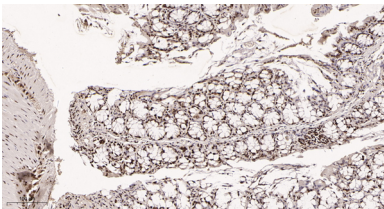
Image Data



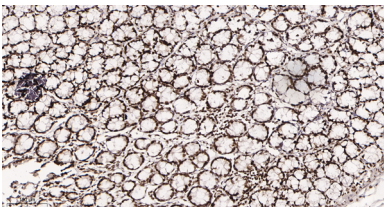
Western blot analysis of lysates from HEK293 cells, using KAP1 Rabbit mAb. The HRP-conjugated Goat anti-Rabbit IgG antibody was used to detect the antibody.



Immunohistochemical analysis of paraffin-embedded Human colon tissue. 1, KAP1 Rabbit Monoclonal Antibody was diluted at 1:200(4°C,overnight). 2, EDTA pH 9.0 was used for antibody retrieval(>98°C,20min). 3,Secondary antibody was diluted at 1:200(room temperature, 30min).



Immunohistochemical analysis of paraffin-embedded Mouse colon tissue. 1, KAP1 Rabbit Monoclonal Antibody was diluted at 1:200(4°C,overnight). 2, EDTA pH 9.0 was used for antibody retrieval(>98°C,20min). 3,Secondary antibody was diluted at 1:200(room temperature, 30min).



Immunohistochemical analysis of paraffin-embedded Rat colon tissue. 1, KAP1 Rabbit Monoclonal Antibody was diluted at 1:200(4°C,overnight). 2, EDTA pH 9.0 was used for antibody retrieval(>98°C,20min). 3,Secondary antibody was diluted at 1:200(room temperature, 30min).