

---

**Product Name: ISG15 Rabbit Monoclonal Antibody****Catalog #: AMRe21492**

For research use only.

**Summary**

<b>Description</b>	Recombinant rabbit monoclonal antibody
<b>Host</b>	Rabbit
<b>Application</b>	WB,IF,ELISA
<b>Reactivity</b>	Human
<b>Conjugation</b>	Unconjugated
<b>Modification</b>	Unmodified
<b>Isotype</b>	IgG,Kappa
<b>Clonality</b>	Monoclonal
<b>Form</b>	Liquid
<b>Concentration</b>	0.3mg/ml. The concentration of this product may be batch-dependent.
<b>Storage</b>	Aliquot and store at -20°C (valid for 12 months). Avoid freeze/thaw cycles.
<b>Shipping</b>	Ice bags
<b>Buffer</b>	PBS, 50% glycerol, 0.05% Proclin 300, 0.05%protective protein
<b>Purification</b>	Protein A

**Application**

<b>Dilution Ratio</b>	WB 1:500-1:2000;IF 1:200-1:1000;ELISA 1:5000-1:20000;
<b>Molecular Weight</b>	Calculated MW:18kD;Observed MW:18kD

**Antigen Information**

<b>Gene Name</b>	ISG15
<b>Alternative Names</b>	
<b>Gene ID</b>	9636.0
<b>SwissProt ID</b>	P05161
<b>Immunogen</b>	A synthetic peptide of human ISG15

**Background**

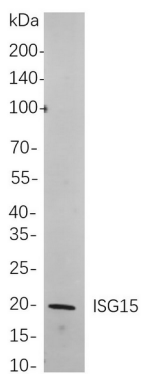
Cell localization:Cytoplasm.The protein encoded by this gene is a ubiquitin-like protein that is conjugated to intracellular target proteins upon activation by interferon-alpha and interferon-beta. Several functions have been ascribed to the encoded protein, including chemotactic activity towards neutrophils, direction of ligated target proteins to intermediate filaments, cell-to-cell

signaling, and antiviral activity during viral infections. While conjugates of this protein have been found to be noncovalently attached to intermediate filaments, this protein is sometimes secreted. [provided by RefSeq, Dec 2012],

## Research Area

Cell Biology; Epigenetics and Nuclear Signaling

## Image Data



Western blot analysis of lysates from HeLa cells, using ISG15 Rabbit mAb. The HRP-conjugated Goat anti-Rabbit IgG antibody was used to detect the antibody.