

Product Name: S6K1 Rabbit Monoclonal Antibody**Catalog #: AMRe21491**

For research use only.

Summary

Description	Recombinant rabbit monoclonal antibody
Host	Rabbit
Application	WB,IHC,ICC/IF,ELISA,IP
Reactivity	Human,Mouse,Rat
Conjugation	Unconjugated
Modification	Unmodified
Isotype	IgG,Kappa
Clonality	Monoclonal
Form	Liquid
Concentration	0.3mg/ml. The concentration of this product may be batch-dependent.
Storage	Aliquot and store at -20°C (valid for 12 months). Avoid freeze/thaw cycles.
Shipping	Ice bags
Buffer	PBS, 50% glycerol, 0.05% Proclin 300, 0.05%protective protein
Purification	Protein A

Application

Dilution Ratio	WB 1:1000-1:5000,IHC 1:200-1:1000,ICC/IF 1:200-1:1000,ELISA 1:5000-1:20000,IP 1:50-1:200
Molecular Weight	Calculated MW:59kD;Observed MW:70kD

Antigen Information

Gene Name	RPS6KB1 RPS6KB1;STK14A;Ribosomal protein S6 kinase beta-1;S6K-beta-1;S6K1;70 kDa ribosomal
Alternative Names	protein S6 kinase 1;p70S6K1;p70-S6K 1;Ribosomal protein S6 kinase I;Serine/threonine-protein kinase 14A;p70 ribosomal S6 kinase alpha;p70 S6 kinas
Gene ID	6198.0
SwissProt ID	P23443
Immunogen	A synthetic peptide of human S6K1

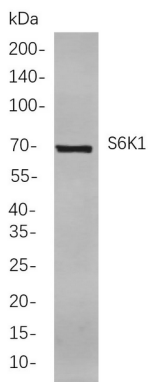
Background

Cell localization:Cytoplasm.ribosomal protein S6 kinase B1(RPS6KB1) Homo sapiens This gene encodes a member of the

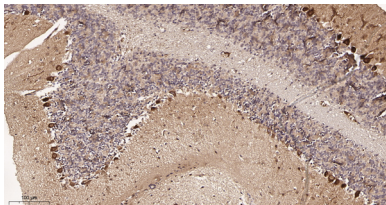
ribosomal S6 kinase family of serine/threonine kinases. The encoded protein responds to mTOR (mammalian target of rapamycin) signaling to promote protein synthesis, cell growth, and cell proliferation. Activity of this gene has been associated with human cancer. Alternatively spliced transcript variants have been observed. The use of alternative translation start sites results in isoforms with longer or shorter N-termini which may differ in their subcellular localizations. There are two pseudogenes for this gene on chromosome 17. [provided by RefSeq, Jan 2013],

Research Area

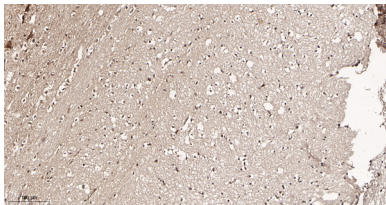
Image Data



Western blot analysis of lysates from HeLa cells, using S6K1 Rabbit mAb. The HRP-conjugated Goat anti-Rabbit IgG antibody was used to detect the antibody.



Immunohistochemical analysis of paraffin-embedded Mouse brain tissue. 1, S6K1 Rabbit Monoclonal Antibody was diluted at 1:200(4°C,overnight). 2, EDTA pH 9.0 was used for antibody retrieval(>98°C,20min). 3,Secondary antibody was diluted at 1:200(room temperature, 30min).



Immunohistochemical analysis of paraffin-embedded Rat brain tissue. 1, S6K1 Rabbit Monoclonal Antibody was diluted at 1:200(4°C,overnight). 2, EDTA pH 9.0 was used for antibody retrieval(>98°C,20min). 3,Secondary antibody was diluted at 1:200(room temperature, 30min).