

---

**Product Name: Chromogranin A Rabbit Monoclonal Antibody****Catalog #: AMRe21490**

For research use only.

**Summary**

<b>Description</b>	Recombinant rabbit monoclonal antibody
<b>Host</b>	Rabbit
<b>Application</b>	WB,IHC,ICC/IF,ELISA,IP
<b>Reactivity</b>	Human,Mouse,Rat
<b>Conjugation</b>	Unconjugated
<b>Modification</b>	Unmodified
<b>Isotype</b>	IgG,Kappa
<b>Clonality</b>	Monoclonal
<b>Form</b>	Liquid
<b>Concentration</b>	0.3mg/ml. The concentration of this product may be batch-dependent.
<b>Storage</b>	Aliquot and store at -20°C (valid for 12 months). Avoid freeze/thaw cycles.
<b>Shipping</b>	Ice bags
<b>Buffer</b>	PBS, 50% glycerol, 0.05% Proclin 300, 0.05%protective protein
<b>Purification</b>	Protein A

**Application**

<b>Dilution Ratio</b>	WB 1:1000-1:5000,IHC 1:200-1:1000,ICC/IF 1:200-1:1000,ELISA 1:5000-1:20000,IP 1:50-1:200
<b>Molecular Weight</b>	Calculated MW:51kD;Observed MW:80kD

**Antigen Information**

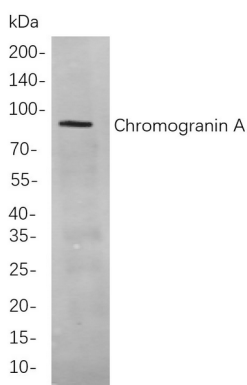
<b>Gene Name</b>	Chromogranin A beta Granin;betagranin;N-terminal fragment of chromogranin A;catestatin;CgA;CHG A;Chga;chromofungin;Chromogranin A;Chromogranin A parathyroid secretory protein
<b>Alternative Names</b>	1;Chromogranin A precursor;ChromograninA;CMGA_HUMAN;ER-37;Pancreastatin;Parastatin;Parathyroid secretory protein 1;Pituitary secretory protein I;Secretory protein I;SP I;SP-I;SP1;SPI;vasostatin 2;Vasostatin;Vasostatin I;Vasostatin II;vasostatin-2
<b>Gene ID</b>	1113.0
<b>SwissProt ID</b>	P10645
<b>Immunogen</b>	A synthetic peptide of human Chromogranin A

## Background

Cell localization: Secreted. The protein encoded by this gene is a member of the chromogranin/secretogranin family of neuroendocrine secretory proteins. It is found in secretory vesicles of neurons and endocrine cells. This gene product is a precursor to three biologically active peptides; vasostatin, pancreastatin, and parastatin. These peptides act as autocrine or paracrine negative modulators of the neuroendocrine system. Two other peptides, catestatin and chromofungin, have antimicrobial activity and antifungal activity, respectively. Two transcript variants encoding different isoforms have been found for this gene. [provided by RefSeq, Sep 2014],

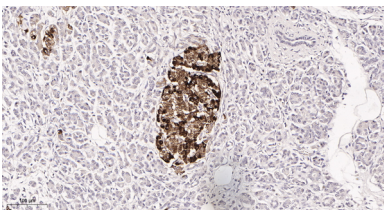
## Research Area

### Image Data

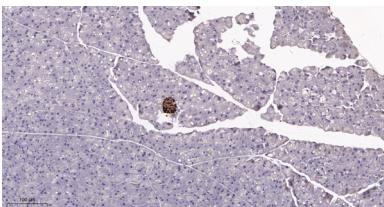


Western blot analysis of lysates from SH-SY5Y

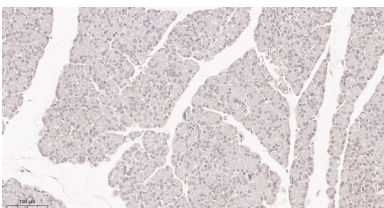
cells, using Chromogranin A Rabbit mAb. The HRP-conjugated Goat anti-Rabbit IgG antibody was used to detect the antibody.



Immunohistochemical analysis of paraffin-embedded Human pancreas tissue. 1, Chromogranin A Rabbit Monoclonal Antibody was diluted at 1:200(4°C, overnight). 2, EDTA pH 9.0 was used for antibody retrieval(>98°C, 20min). 3, Secondary antibody was diluted at 1:200(room temperature, 30min).



Immunohistochemical analysis of paraffin-embedded Mouse pancreas tissue. 1, Chromogranin A Rabbit Monoclonal Antibody was diluted at 1:200(4°C, overnight). 2, EDTA pH 9.0 was used for antibody retrieval(>98°C, 20min). 3, Secondary antibody was diluted at 1:200(room temperature, 30min).



Immunohistochemical analysis of paraffin-embedded Rat pancreas tissue. 1, Chromogranin A Rabbit Monoclonal Antibody was diluted at 1:200(4°C, overnight). 2, EDTA pH 9.0 was used for antibody retrieval(>98°C, 20min). 3, Secondary antibody was diluted at 1:200(room temperature, 30min).