
Product Name: Adiponectin Rabbit Monoclonal Antibody**Catalog #: AMRe21479**

For research use only.

Summary

| | |
|----------------------|---|
| Description | Recombinant rabbit monoclonal antibody |
| Host | Rabbit |
| Application | WB,IHC,ICC/IF,ELISA,IP |
| Reactivity | Human,Mouse,Rat |
| Conjugation | Unconjugated |
| Modification | Unmodified |
| Isotype | IgG,Kappa |
| Clonality | Monoclonal |
| Form | Liquid |
| Concentration | 0.3mg/ml. The concentration of this product may be batch-dependent. |
| Storage | Aliquot and store at -20°C (valid for 12 months). Avoid freeze/thaw cycles. |
| Shipping | Ice bags |
| Buffer | PBS, 50% glycerol, 0.05% Proclin 300, 0.05%protective protein |
| Purification | Protein A |

Application

| | |
|-------------------------|---|
| Dilution Ratio | WB 1:1000-1:5000,IHC 1:1000-1:4000,ICC/IF 1:200-1:1000,ELISA 1:5000-1:20000,IP 1:50-1:200 |
| Molecular Weight | Calculated MW:26kD;Observed MW:30kD |

Antigen Information

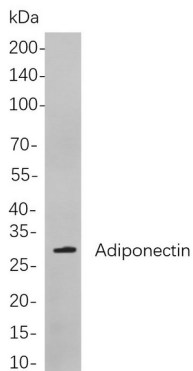
| | |
|--------------------------|---|
| Gene Name | ADIPOQ |
| Alternative Names | ADIPOQ;ACDC;ACRP30;APM1;GBP28;Adiponectin;30 kDa adipocyte complement-related protein;Adipocyte complement-related 30 kDa protein;ACRP30;Adipocyte;C1q and collagen domain-containing protein;Adipose most abundant gene transcript 1 |
| Gene ID | 9370.0 |
| SwissProt ID | Q15848 |
| Immunogen | A synthetic peptide of human Adiponectin |

Background

Cell localization: Secreted. adiponectin, C1Q and collagen domain containing (ADIPOQ) Homo sapiens This gene is expressed in adipose tissue exclusively. It encodes a protein with similarity to collagens X and VIII and complement factor C1q. The encoded protein circulates in the plasma and is involved with metabolic and hormonal processes. Mutations in this gene are associated with adiponectin deficiency. Multiple alternatively spliced variants, encoding the same protein, have been identified. [provided by RefSeq, Apr 2010],

Research Area

Image Data



Western blot analysis of lysates from Rat fat cells, using Adiponectin Rabbit mAb. The HRP-conjugated Goat anti-Rabbit IgG antibody was used to detect the antibody.