

**Product Name: GRP78/BiP Rabbit Monoclonal Antibody****Catalog #: AMRe21472**

For research use only.

**Summary**

<b>Description</b>	Recombinant rabbit monoclonal antibody
<b>Host</b>	Rabbit
<b>Application</b>	WB,IHC,ICC/IF,ELISA,IP
<b>Reactivity</b>	Human,Mouse,Rat
<b>Conjugation</b>	Unconjugated
<b>Modification</b>	Unmodified
<b>Isotype</b>	IgG,Kappa
<b>Clonality</b>	Monoclonal
<b>Form</b>	Liquid
<b>Concentration</b>	0.3mg/ml. The concentration of this product may be batch-dependent.
<b>Storage</b>	Aliquot and store at -20°C (valid for 12 months). Avoid freeze/thaw cycles.
<b>Shipping</b>	Ice bags
<b>Buffer</b>	PBS, 50% glycerol, 0.05% Proclin 300, 0.05%protective protein
<b>Purification</b>	Protein A

**Application**

<b>Dilution Ratio</b>	WB 1:1000-1:5000,IHC 1:200-1:1000,ICC/IF 1:200-1:1000,ELISA 1:5000-1:20000,IP 1:50-1:200
<b>Molecular Weight</b>	Calculated MW:72kD;Observed MW:78kD

**Antigen Information**

<b>Gene Name</b>	HSPA5 GRP78 78 kDa glucose-regulated protein;GRP-78;Endoplasmic reticulum lumenal Ca <sup>2+</sup> -binding
<b>Alternative Names</b>	protein grp78;Heat shock 70 kDa protein 5;Immunoglobulin heavy chain-binding protein;BiP;
<b>Gene ID</b>	3309.0
<b>SwissProt ID</b>	P11021
<b>Immunogen</b>	A synthetic peptide of human GRP78 BiP

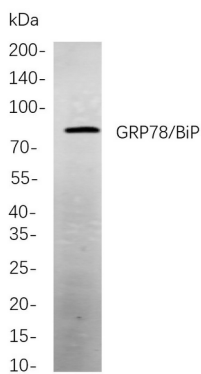
**Background**

Cell localization:Cytoplasm.The protein encoded by this gene is a member of the heat shock protein 70 (HSP70) family. It is

localized in the lumen of the endoplasmic reticulum (ER), and is involved in the folding and assembly of proteins in the ER. As this protein interacts with many ER proteins, it may play a key role in monitoring protein transport through the cell.[provided by RefSeq, Sep 2010],

## Research Area

## Image Data



Western blot analysis of lysates from C6 cells, using GRP78/BiP Rabbit mAb. The HRP-conjugated Goat anti-Rabbit IgG antibody was used to detect the antibody.