

**Product Name: ATG7 Rabbit Monoclonal Antibody****Catalog #: AMRe21471**

For research use only.

**Summary**

<b>Description</b>	Recombinant rabbit monoclonal antibody
<b>Host</b>	Rabbit
<b>Application</b>	WB,IHC,ICC/IF,ELISA,IP
<b>Reactivity</b>	Human,Mouse,Rat
<b>Conjugation</b>	Unconjugated
<b>Modification</b>	Unmodified
<b>Isotype</b>	IgG,Kappa
<b>Clonality</b>	Monoclonal
<b>Form</b>	Liquid
<b>Concentration</b>	0.3mg/ml. The concentration of this product may be batch-dependent.
<b>Storage</b>	Aliquot and store at -20°C (valid for 12 months). Avoid freeze/thaw cycles.
<b>Shipping</b>	Ice bags
<b>Buffer</b>	PBS, 50% glycerol, 0.05% Proclin 300, 0.05%protective protein
<b>Purification</b>	Protein A

**Application**

<b>Dilution Ratio</b>	WB 1:1000-1:5000,IHC 1:200-1:1000,ICC/IF 1:200-1:1000,ELISA 1:5000-1:20000,IP 1:50-1:200
<b>Molecular Weight</b>	Calculated MW:78kD;Observed MW:78kD

**Antigen Information**

<b>Gene Name</b>	ATG7 APG7L Ubiquitin-like modifier-activating enzyme ATG7;ATG12-activating enzyme E1
<b>Alternative Names</b>	ATG7;Autophagy-related protein 7;APG7-like;hAGP7;Ubiquitin-activating enzyme E1-like protein;
<b>Gene ID</b>	10533.0
<b>SwissProt ID</b>	O95352
<b>Immunogen</b>	A synthetic peptide of human ATG7

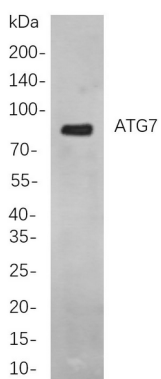
**Background**

Cell localization:Cytoplasm.This gene encodes an E1-like activating enzyme that is essential for autophagy and cytoplasmic to

vacuole transport. The encoded protein is also thought to modulate p53-dependent cell cycle pathways during prolonged metabolic stress. It has been associated with multiple functions, including axon membrane trafficking, axonal homeostasis, mitophagy, adipose differentiation, and hematopoietic stem cell maintenance. Alternative splicing results in multiple transcript variants. [provided by RefSeq, Sep 2015],

## Research Area

## Image Data



Western blot analysis of lysates from HeLa cells, using ATG7 Rabbit mAb. The HRP-conjugated Goat anti-Rabbit IgG antibody was used to detect the antibody.