

---

**Product Name: TAK1 Rabbit Monoclonal Antibody****Catalog #: AMRe21459**

For research use only.

**Summary**

<b>Description</b>	Recombinant rabbit monoclonal antibody
<b>Host</b>	Rabbit
<b>Application</b>	WB,ICC/IF,ELISA,IP
<b>Reactivity</b>	Human,Mouse,Rat
<b>Conjugation</b>	Unconjugated
<b>Modification</b>	Unmodified
<b>Isotype</b>	IgG,Kappa
<b>Clonality</b>	Monoclonal
<b>Form</b>	Liquid
<b>Concentration</b>	0.3mg/ml. The concentration of this product may be batch-dependent.
<b>Storage</b>	Aliquot and store at -20°C (valid for 12 months). Avoid freeze/thaw cycles.
<b>Shipping</b>	Ice bags
<b>Buffer</b>	PBS, 50% glycerol, 0.05% Proclin 300, 0.05%protective protein
<b>Purification</b>	Protein A

**Application**

<b>Dilution Ratio</b>	WB 1:1000-1:5000,ICC/IF 1:200-1:1000,ELISA 1:5000-1:20000,IP 1:50-1:200
<b>Molecular Weight</b>	Calculated MW:67kD;Observed MW:67kD

**Antigen Information**

<b>Gene Name</b>	MAP3K7
<b>Alternative Names</b>	MAP3K7;TAK1;Mitogen-activated protein kinase kinase kinase 7;Transforming growth factor-beta-activated kinase 1;TGF-beta-activated kinase 1
<b>Gene ID</b>	6885.0
<b>SwissProt ID</b>	O43318
<b>Immunogen</b>	A synthetic peptide corresponding to target protein

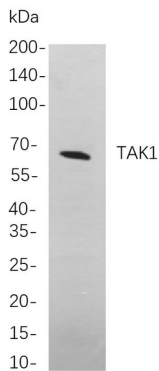
**Background**

Cell localization:Cytoplasm, Membrane.The protein encoded by this gene is a member of the serine/threonine protein kinase family. This kinase mediates the signaling transduction induced by TGF beta and morphogenetic protein (BMP), and controls a

variety of cell functions including transcription regulation and apoptosis. In response to IL-1, this protein forms a kinase complex including TRAF6, MAP3K7P1/TAB1 and MAP3K7P2/TAB2; this complex is required for the activation of nuclear factor kappa B. This kinase can also activate MAPK8/JNK, MAP2K4/MKK4, and thus plays a role in the cell response to environmental stresses. Four alternatively spliced transcript variants encoding distinct isoforms have been reported. [provided by RefSeq, Jul 2008],

## Research Area

## Image Data



Western blot analysis of lysates from A431 cells, using TAK1 Rabbit mAb. The HRP-conjugated Goat anti-Rabbit IgG antibody was used to detect the antibody.