
Product Name: Cytochrome C Rabbit Monoclonal Antibody**Catalog #: AMRe21457**

For research use only.

Summary

Description	Recombinant rabbit monoclonal antibody
Host	Rabbit
Application	WB,IHC,IF,IP,ELISA
Reactivity	Human,Mouse,Rat
Conjugation	Unconjugated
Modification	Unmodified
Isotype	IgG,Kappa
Clonality	Monoclonal
Form	Liquid
Concentration	0.3mg/ml. The concentration of this product may be batch-dependent.
Storage	Aliquot and store at -20°C (valid for 12 months). Avoid freeze/thaw cycles.
Shipping	Ice bags
Buffer	PBS, 50% glycerol, 0.05% Proclin 300, 0.05%protective protein
Purification	Protein A

Application

Dilution Ratio	IHC 1:1000-1:4000;WB 1:1000-1:5000;IF 1:200-1:1000;ELISA 1:5000-1:20000;IP 1:50-1:200,
Molecular Weight	Calculated MW:12kD;Observed MW:14kD

Antigen Information

Gene Name	CYCS CYC
Alternative Names	Cytochrome c
Gene ID	54205.0
SwissProt ID	P99999
Immunogen	A synthetic peptide of human Cytochrome C

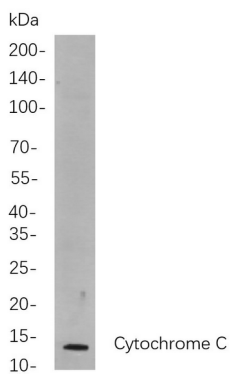
Background

Cell localization:Mitochondrion intermembrane space.This gene encodes a small heme protein that functions as a central component of the electron transport chain in mitochondria. The encoded protein associates with the inner membrane of the mitochondrion where it accepts electrons from cytochrome b and transfers them to the cytochrome oxidase complex. This

protein is also involved in initiation of apoptosis. Mutations in this gene are associated with autosomal dominant nonsyndromic thrombocytopenia. Numerous processed pseudogenes of this gene are found throughout the human genome. [provided by RefSeq, Jul 2010],

Research Area

Image Data



Western blot analysis of lysates from Jurkat cells, using Cytochrome C Rabbit mAb. The HRP-conjugated Goat anti-Rabbit IgG antibody was used to detect the antibody.