
Product Name: CD14 Rabbit Monoclonal Antibody**Catalog #: AMRe21434**

For research use only.

Summary

Description	Recombinant rabbit monoclonal antibody
Host	Rabbit
Application	WB,IHC,IF,ELISA
Reactivity	Human,Mouse,Rat
Conjugation	Unconjugated
Modification	Unmodified
Isotype	IgG,Kappa
Clonality	Monoclonal
Form	Liquid
Concentration	0.3mg/ml. The concentration of this product may be batch-dependent.
Storage	Aliquot and store at -20°C (valid for 12 months). Avoid freeze/thaw cycles.
Shipping	Ice bags
Buffer	PBS, 50% glycerol, 0.05% Proclin 300, 0.05%protective protein
Purification	Protein A

Application

Dilution Ratio	IHC 1:2000-1:5000;WB 1:1000-1:5000;IF 1:200-1:1000;ELISA 1:5000-1:20000;
Molecular Weight	Calculated MW:40kD;Observed MW:50kD

Antigen Information

Gene Name	CD14 Monocyte differentiation antigen CD14;Myeloid cell-specific leucine-rich glycoprotein;CD
Alternative Names	antigen CD14;[Cleaved into: Monocyte differentiation antigen CD14, urinary form;Monocyte differentiation antigen CD14, membrane-bound form]
Gene ID	929.0
SwissProt ID	P08571
Immunogen	A synthetic peptide of human CD14

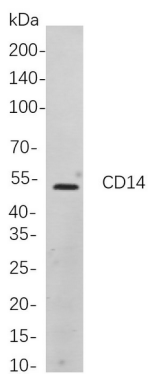
Background

Cell localization:Membrane.The protein encoded by this gene is a surface antigen that is preferentially expressed on

monocytes/macrophages. It cooperates with other proteins to mediate the innate immune response to bacterial lipopolysaccharide. Alternative splicing results in multiple transcript variants encoding the same protein. [provided by RefSeq, Mar 2010],

Research Area

Image Data



Western blot analysis of lysates from THP-1 cells, using CD14 Rabbit mAb. The HRP-conjugated Goat anti-Rabbit IgG antibody was used to detect the antibody.