

Product Name: CD36 Rabbit Monoclonal Antibody**Catalog #: AMRe21419**

For research use only.

Summary

Description	Recombinant rabbit monoclonal antibody
Host	Rabbit
Application	WB,IHC,ICC/IF,ELISA,IP
Reactivity	Human,Mouse,Rat
Conjugation	Unconjugated
Modification	Unmodified
Isotype	IgG,Kappa
Clonality	Monoclonal
Form	Liquid
Concentration	0.3mg/ml. The concentration of this product may be batch-dependent.
Storage	Aliquot and store at -20°C (valid for 12 months). Avoid freeze/thaw cycles.
Shipping	Ice bags
Buffer	PBS, 50% glycerol, 0.05% Proclin 300, 0.05%protective protein
Purification	Protein A

Application

Dilution Ratio	WB 1:1000-1:5000,IHC 1:1000-1:4000,ICC/IF 1:200-1:1000,ELISA 1:5000-1:20000,IP 1:50-1:200
Molecular Weight	Calculated MW:53kD;Observed MW:90kD

Antigen Information

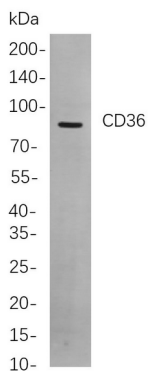
Gene Name	CD36 CD36;GP3B;GP4;Platelet glycoprotein 4;Fatty acid translocase;FAT;Glycoprotein
Alternative Names	IIlb;GPIIIB;Leukocyte differentiation antigen CD36;PAS IV;PAS-4;Platelet collagen receptor;Platelet glycoprotein IV;GPIV;Thrombospondin receptor;CD36
Gene ID	948.0
SwissProt ID	P16671
Immunogen	A synthetic peptide of human CD36

Background

Cell localization:Membrane.The protein encoded by this gene is the fourth major glycoprotein of the platelet surface and serves as a receptor for thrombospondin in platelets and various cell lines. Since thrombospondins are widely distributed proteins involved in a variety of adhesive processes, this protein may have important functions as a cell adhesion molecule. It binds to collagen, thrombospondin, anionic phospholipids and oxidized LDL. It directly mediates cytoadherence of Plasmodium falciparum parasitized erythrocytes and it binds long chain fatty acids and may function in the transport and/or as a regulator of fatty acid transport. Mutations in this gene cause platelet glycoprotein deficiency. Multiple alternatively spliced transcript variants have been found for this gene. [provided by RefSeq, Feb 2014],

Research Area

Image Data



Western blot analysis of lysates from Mouse spleen cells, using CD36 Rabbit mAb. The HRP-conjugated Goat anti-Rabbit IgG antibody was used to detect the antibody.