
Product Name: CD20 Rabbit Monoclonal Antibody**Catalog #: AMRe21402**

For research use only.

Summary

Description	Recombinant rabbit monoclonal antibody
Host	Rabbit
Application	WB,IHC,ICC/IF,ELISA,IP
Reactivity	Human
Conjugation	Unconjugated
Modification	Unmodified
Isotype	IgG,Kappa
Clonality	Monoclonal
Form	Liquid
Concentration	0.3mg/ml. The concentration of this product may be batch-dependent.
Storage	Aliquot and store at -20°C (valid for 12 months). Avoid freeze/thaw cycles.
Shipping	Ice bags
Buffer	PBS, 50% glycerol, 0.05% Proclin 300, 0.05%protective protein
Purification	Protein A

Application

Dilution Ratio	WB 1:1000-1:5000,IHC 1:500-1:5000,ICC/IF 1:200-1:1000,ELISA 1:5000-1:20000,IP 1:50-1:200
Molecular Weight	Calculated MW:33kD;Observed MW:36kD

Antigen Information

Gene Name	MS4A1 CD20
Alternative Names	B-lymphocyte antigen CD20;B-lymphocyte surface antigen B1;Bp35;Leukocyte surface antigen Leu-16;Membrane-spanning 4-domains subfamily A member 1;CD antigen CD20;
Gene ID	931.0
SwissProt ID	P11836
Immunogen	A synthetic peptide of human CD20

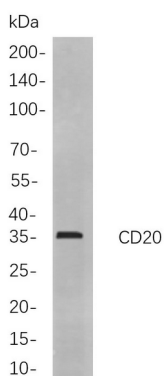
Background

Cell localization:Membrane.This gene encodes a member of the membrane-spanning 4A gene family. Members of this nascent protein family are characterized by common structural features and similar intron/exon splice boundaries and display unique

expression patterns among hematopoietic cells and nonlymphoid tissues. This gene encodes a B-lymphocyte surface molecule which plays a role in the development and differentiation of B-cells into plasma cells. This family member is localized to 11q12, among a cluster of family members. Alternative splicing of this gene results in two transcript variants which encode the same protein. [provided by RefSeq, Jul 2008],

Research Area

Image Data



Western blot analysis of lysates from Raji cells, using CD20 Rabbit mAb. The HRP-conjugated Goat anti-Rabbit IgG antibody was used to detect the antibody.