

---

**Product Name:  $\beta$ -Galactosidase Rabbit Monoclonal Antibody****Catalog #: AMRe21397**

For research use only.

**Summary**

<b>Description</b>	Recombinant rabbit monoclonal antibody
<b>Host</b>	Rabbit
<b>Application</b>	WB,IHC,IF,ELISA
<b>Reactivity</b>	Human,Mouse,Rat
<b>Conjugation</b>	Unconjugated
<b>Modification</b>	Unmodified
<b>Isotype</b>	IgG,Kappa
<b>Clonality</b>	Monoclonal
<b>Form</b>	Liquid
<b>Concentration</b>	0.3mg/ml. The concentration of this product may be batch-dependent.
<b>Storage</b>	Aliquot and store at -20°C (valid for 12 months). Avoid freeze/thaw cycles.
<b>Shipping</b>	Ice bags
<b>Buffer</b>	PBS, 50% glycerol, 0.05% Proclin 300, 0.05%protective protein
<b>Purification</b>	Protein A

**Application**

<b>Dilution Ratio</b>	IHC 1:2000-1:10000;WB 1:1000-1:5000;IF 1:200-1:1000;ELISA 1:5000-1:20000;
<b>Molecular Weight</b>	Calculated MW:76kD;Observed MW:100kD

**Antigen Information**

<b>Gene Name</b>	GLB1
<b>Alternative Names</b>	GLB1;ELNR1;Beta-galactosidase;Acid beta-galactosidase;Lactase;Elastin receptor 1
<b>Gene ID</b>	2720.0
<b>SwissProt ID</b>	P16278
<b>Immunogen</b>	A synthetic peptide of human GLB1

**Background**

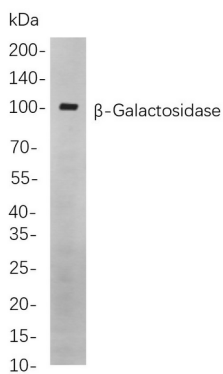
Cell localization:Lysosome.This gene encodes a member of the glycosyl hydrolase 35 family of proteins. Alternative splicing results in multiple transcript variants, at least one of which encodes a preproprotein that is proteolytically processed to generate the mature lysosomal enzyme. This enzyme catalyzes the hydrolysis of a terminal beta-linked galactose residue from

ganglioside substrates and other glycoconjugates. Mutations in this gene may result in GM1-gangliosidosis and Morquio B syndrome. [provided by RefSeq, Nov 2015],

## Research Area

Signal Transduction; Metabolism

## Image Data



Western blot analysis of lysates from Mouse brain cells, using  $\beta$ -Galactosidase Rabbit mAb. The HRP-conjugated Goat anti-Rabbit IgG antibody was used to detect the antibody.