

---

**Product Name: GSK3  $\alpha/\beta$  Rabbit Monoclonal Antibody****Catalog #: AMRe21392**

For research use only.

**Summary**

<b>Description</b>	Recombinant rabbit monoclonal antibody
<b>Host</b>	Rabbit
<b>Application</b>	WB,IHC,IF,IP,ELISA
<b>Reactivity</b>	Human,Mouse,Rat
<b>Conjugation</b>	Unconjugated
<b>Modification</b>	Unmodified
<b>Isotype</b>	IgG,Kappa
<b>Clonality</b>	Monoclonal
<b>Form</b>	Liquid
<b>Concentration</b>	0.3mg/ml. The concentration of this product may be batch-dependent.
<b>Storage</b>	Aliquot and store at -20°C (valid for 12 months). Avoid freeze/thaw cycles.
<b>Shipping</b>	Ice bags
<b>Buffer</b>	PBS, 50% glycerol, 0.05% Proclin 300, 0.05%protective protein
<b>Purification</b>	Protein A

**Application**

<b>Dilution Ratio</b>	IHC 1:400-1:800;WB 1:2000-1:10000;IF 1:200-1:1000;ELISA 1:5000-1:20000;IP 1:50-1:200;
<b>Molecular Weight</b>	Calculated MW:51kD,47kD;Observed MW:51kD,47kD

**Antigen Information**

<b>Gene Name</b>	GSK3A/GSK3B GSK3A;Glycogen synthase kinase-3 alpha;GSK-3 alpha;Serine/threonine-protein kinase
<b>Alternative Names</b>	GSK3A;GSK3B;Glycogen synthase kinase-3 beta;GSK-3 beta;Serine/threonine-protein kinase GSK3B
<b>Gene ID</b>	2931
<b>SwissProt ID</b>	P49840;P49841
<b>Immunogen</b>	

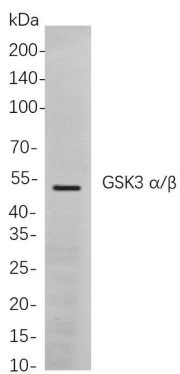
**Background**

Cell localization:Cytoplasm.glycogen synthase kinase 3 alpha(GSK3A) Homo sapiens This gene encodes a multifunctional

Ser/Thr protein kinase that is implicated in the control of several regulatory proteins including glycogen synthase, and transcription factors, such as JUN. It also plays a role in the WNT and PI3K signaling pathways, as well as regulates the production of beta-amyloid peptides associated with Alzheimer's disease. [provided by RefSeq, Oct 2011],

## Research Area

## Image Data



Western blot analysis of lysates from A549 cells, using GSK3  $\alpha/\beta$  Rabbit mAb. The HRP-conjugated Goat anti-Rabbit IgG antibody was used to detect the antibody.