

Product Name: Caldesmon Rabbit Monoclonal Antibody
Catalog #: AMRe21383



Summary

Production Name	Caldesmon Rabbit Monoclonal Antibody
Description	Rabbit Monoclonal Antibody
Host	Rabbit
Application	WB,IHC,IF,IP,ELISA
Reactivity	Human,Mouse,Rat

Performance

Conjugation	Unconjugated
Modification	Unmodified
Isotype	IgG,Kappa
Clonality	Monoclonal
Form	Liquid
Storage	Store at 4°C short term. Aliquot and store at -20°C long term. Avoid freeze/thaw cycles.
Buffer	PBS, 50% glycerol, 0.05% Proclin 300, 0.05% protective protein
Purification	Protein A

Immunogen

Gene Name	CALD1
Alternative Names	CALD1;CAD;CDM;Caldesmon;CDM
Gene ID	800
SwissProt ID	Q05682.

Application

Dilution Ratio	IHC 1:200-1:1000;WB 1:2000-1:10000;IF 1:200-1:1000;ELISA 1:5000-1:20000;IP 1:50-1:200;
Molecular Weight	Calculated MW:93kD;Observed MW:70kD

Background

Cell localization:Cytoplasm.This gene encodes a calmodulin- and actin-binding protein that plays an essential role inThe

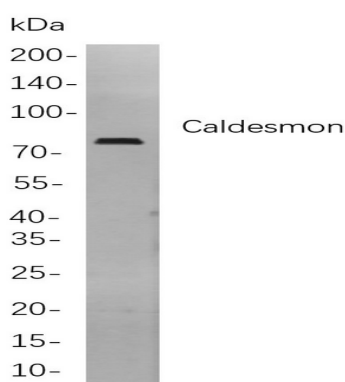
Product Name: Caldesmon Rabbit Monoclonal Antibody
Catalog #: AMRe21383



regulation of smooth muscle and nonmuscle contraction. The conserved domain of this protein possesses the binding activities to Ca^{2+} -calmodulin, actin, tropomyosin, myosin, and phospholipids. This protein is a potent inhibitor of the actin-tropomyosin activated myosin MgATPase, and serves as a mediating factor for Ca^{2+} -dependent inhibition of smooth muscle contraction. Alternative splicing of this gene results in multiple transcript variants encoding distinct isoforms. [provided by RefSeq, Jul 2008],

Research Area

Image Data



Western blot analysis of lysates from HeLa

cells, using Caldesmon Rabbit mAb. The HRP-conjugated Goat anti-Rabbit IgG antibody was used to detect the antibody.

Note

For research use only.