

Product Name: GM130 Rabbit Monoclonal Antibody**Catalog #: AMRe21380**

For research use only.

Summary

Description	Recombinant rabbit monoclonal antibody
Host	Rabbit
Application	WB,IHC,ICC/IF,ELISA,IP
Reactivity	Human,Mouse,Rat
Conjugation	Unconjugated
Modification	Unmodified
Isotype	IgG,Kappa
Clonality	Monoclonal
Form	Liquid
Concentration	0.3mg/ml. The concentration of this product may be batch-dependent.
Storage	Aliquot and store at -20°C (valid for 12 months). Avoid freeze/thaw cycles.
Shipping	Ice bags
Buffer	PBS, 50% glycerol, 0.05% Proclin 300, 0.05%protective protein
Purification	Protein A

Application

Dilution Ratio	WB 1:2000-1:10000,IHC 1:200-1:1000,ICC/IF 1:200-1:1000,ELISA 1:5000-1:20000,IP 1:50-1:200
Molecular Weight	Calculated MW:113kD;Observed MW:130kD

Antigen Information

Gene Name	GOLGA2
Alternative Names	Golgin subfamily A member 2 (130 kDa cis-Golgi matrix protein;GM130;GM130 autoantigen;Golgin-95)
Gene ID	2801.0
SwissProt ID	Q08379
Immunogen	A synthetic peptide of human GM130

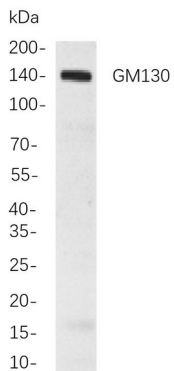
Background

Cell localization:Cytoplasm.The Golgi apparatus, which participates in glycosylation and transport of proteins and lipids inThe

secretory pathway, consists of a series of stacked cisternae (flattened membrane sacs). Interactions betweenThe Golgi and microtubules are thought to be important forThe reorganization ofThe Golgi after it fragments during mitosis. This gene encodes one ofThe golgins, a family of proteins localized toThe Golgi. This encoded protein has been postulated to play roles inThe stacking of Golgi cisternae and in vesicular transport. Several alternatively spliced transcript variants of this gene have been described, butThe full-length nature of these variants has not been determined. [provided by RefSeq, Feb 2010],

Research Area

Image Data



Western blot analysis of lysates from HeLa cells, using GM130 Rabbit mAb. The HRP-conjugated Goat anti-Rabbit IgG antibody was used to detect the antibody.