
Product Name: BRG1 Rabbit Monoclonal Antibody**Catalog #: AMRe21379**

For research use only.

Summary

Description	Recombinant rabbit monoclonal antibody
Host	Rabbit
Application	WB,IHC,IF,ELISA
Reactivity	Human,Mouse,Rat
Conjugation	Unconjugated
Modification	Unmodified
Isotype	IgG,Kappa
Clonality	Monoclonal
Form	Liquid
Concentration	0.3mg/ml. The concentration of this product may be batch-dependent.
Storage	Aliquot and store at -20°C (valid for 12 months). Avoid freeze/thaw cycles.
Shipping	Ice bags
Buffer	PBS, 50% glycerol, 0.05% Proclin 300, 0.05%protective protein
Purification	Protein A

Application

Dilution Ratio	IHC 1:200-1:1000;WB 1:2000-1:10000;IF 1:200-1:1000;ELISA 1:5000-1:20000;
Molecular Weight	Calculated MW:185kD;Observed MW:220kD

Antigen Information

Gene Name	SMARCA4 SMARCA4;BAF190A;BRG1;SNF2B;SNF2L4;Transcription activator BRG1;ATP-dependent
Alternative Names	helicase SMARCA4;BRG1-associated factor 190A;BAF190A;Mitotic growth and transcription activator;Protein BRG-1;Protein brahma homolog 1;SNF2-beta;SWI/S
Gene ID	6597
SwissProt ID	P51532
Immunogen	A synthetic peptide of human BRG1

Background

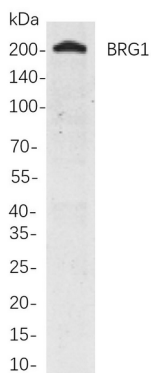
Cell localization:Nucleus.The protein encoded by this gene is a member ofThe SWI/SNF family of proteins and is similar toThe

brahma protein of *Drosophila*. Members of this family have helicase and ATPase activities and are thought to regulate transcription of certain genes by altering the chromatin structure around those genes. The encoded protein is part of the large ATP-dependent chromatin remodeling complex SNF/SWI, which is required for transcriptional activation of genes normally repressed by chromatin. In addition, this protein can bind BRCA1, as well as regulate the expression of the tumorigenic protein CD44. Mutations in this gene cause rhabdoid tumor predisposition syndrome type 2. Multiple transcript variants encoding different isoforms have been found for this gene. [provided by RefSeq, May 2012],

Research Area

Neuroscience; Epigenetics and Nuclear Signaling; Stem Cells; Cancer

Image Data



Western blot analysis of lysates from C6 cells, using BRG1 Rabbit mAb. The HRP-conjugated Goat anti-Rabbit IgG antibody was used to detect the antibody.