

Product Name: CaMKII β Rabbit Monoclonal Antibody
Catalog #: AMRe21377



Summary

Production Name	CaMKII β Rabbit Monoclonal Antibody
Description	Rabbit Monoclonal Antibody
Host	Rabbit
Application	WB,IF,IP,ELISA
Reactivity	Human,Mouse,Rat

Performance

Conjugation	Unconjugated
Modification	Unmodified
Isotype	IgG,Kappa
Clonality	Monoclonal
Form	Liquid
Storage	Store at 4°C short term. Aliquot and store at -20°C long term. Avoid freeze/thaw cycles.
Buffer	PBS, 50% glycerol, 0.05% Proclin 300, 0.05% protective protein
Purification	Protein A

Immunogen

Gene Name	CAMK2B
Alternative Names	CAM2 CAMK2 CAMKB
Gene ID	816.0
SwissProt ID	Q13554.

Application

Dilution Ratio	WB 1:2000-1:10000;IF 1:200-1:1000;ELISA 1:5000-1:20000;IP 1:50-1:200;
Molecular Weight	Calculated MW:54kD;Observed MW:54kD,60kD

Background

Cell localization: Cytoplasm. The product of this gene belongs to the serine/threonine protein kinase family and to the Ca(2+)/calmodulin-dependent protein kinase subfamily. Calcium signaling is crucial for several aspects of plasticity at

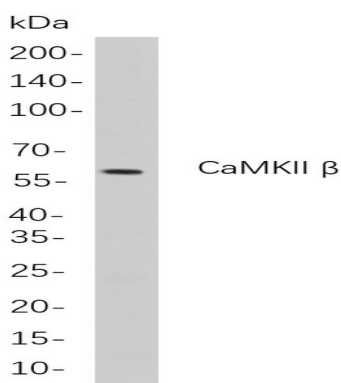
Product Name: CaMKII β Rabbit Monoclonal Antibody
Catalog #: AMRe21377



glutamatergic synapses. In mammalian cells, The enzyme is composed of four different chains: alpha, beta, gamma, and delta. The product of this gene is a beta chain. It is possible that distinct isoforms of this chain have different cellular localizations and interact differently with calmodulin. Alternative splicing results in multiple transcript variants. [provided by RefSeq, May 2014],

Research Area

Image Data



Western blot analysis of lysates from U-87 MG

cells, using CaMKII β Rabbit mAb. The HRP-conjugated Goat anti-Rabbit IgG antibody was used to detect the antibody.

Note

For research use only.