

Product Name: PP2A α/β Rabbit Monoclonal Antibody

Catalog #: AMRe21363

For research use only.

Summary

Description	Recombinant rabbit monoclonal antibody
Host	Rabbit
Application	WB,IHC,ICC/IF,ELISA,IP
Reactivity	Human,Mouse,Rat
Conjugation	Unconjugated
Modification	Unmodified
Isotype	IgG,Kappa
Clonality	Monoclonal
Form	Liquid
Concentration	0.3mg/ml. The concentration of this product may be batch-dependent.
Storage	Aliquot and store at -20°C (valid for 12 months). Avoid freeze/thaw cycles.
Shipping	Ice bags
Buffer	PBS, 50% glycerol, 0.05% Proclin 300, 0.05%protective protein
Purification	Protein A

Application

Dilution Ratio	WB 1:2000-1:10000,IHC 1:200-1:1000,ICC/IF 1:200-1:1000,ELISA 1:5000-1:20000,IP 1:50-1:200
Molecular Weight	Calculated MW:36kD;Observed MW:36kD

Antigen Information

Gene Name	PPP2CA PP2A A;PP2A alpha;PP2A B;PP2A beta;PP2A-alpha;PP2A-beta;PP2AA_HUMAN;PP2Aalpha;PP2AB_HUMAN;PP2Abeta;PP2Ac;PP2CA;PP2Calpha;PP2CB ;PPP2CA;PPP2CB;Protein phosphatase 2 catalytic subunit alpha isoform;Protein phosphatase 2 catalytic subunit beta isoform;Protein phosphatase type 2A catalytic subunit;Replication protein C;RP C;RP-C;RPC;Serine/threonine protein phosphatase 2A catalytic subunit alpha isoform;Serine/threonine protein phosphatase 2A catalytic subunit beta isoform;Serine/threonine-protein phosphatase 2A catalytic subunit alpha isoform;
Alternative Names	
Gene ID	5515;5516

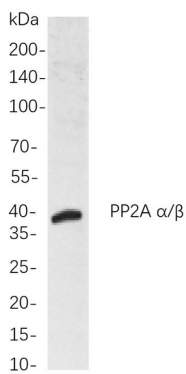
SwissProt ID P67775;P62714
Immunogen

Background

Cell localization: Cytoplasm. This gene encodes the phosphatase 2A catalytic subunit. Protein phosphatase 2A is one of the four major Ser/Thr phosphatases, and it is implicated in the negative control of cell growth and division. It consists of a common heteromeric core enzyme, which is composed of a catalytic subunit and a constant regulatory subunit, that associates with a variety of regulatory subunits. This gene encodes an alpha isoform of the catalytic subunit. [provided by RefSeq, Jul 2008],

Research Area

Image Data



Western blot analysis of lysates from HeLa cells, using PP2A α/β Rabbit mAb. The HRP-conjugated Goat anti-Rabbit IgG antibody was used to detect the antibody.