

---

**Product Name: Ferritin Heavy Chain Rabbit Monoclonal Antibody****Catalog #: AMRe21358**

For research use only.

**Summary**

<b>Description</b>	Recombinant rabbit monoclonal antibody
<b>Host</b>	Rabbit
<b>Application</b>	WB,IHC,ICC/IF,ELISA,IP
<b>Reactivity</b>	Mouse,Rat
<b>Conjugation</b>	Unconjugated
<b>Modification</b>	Unmodified
<b>Isotype</b>	IgG,Kappa
<b>Clonality</b>	Monoclonal
<b>Form</b>	Liquid
<b>Concentration</b>	0.3mg/ml. The concentration of this product may be batch-dependent.
<b>Storage</b>	Aliquot and store at -20°C (valid for 12 months). Avoid freeze/thaw cycles.
<b>Shipping</b>	Ice bags
<b>Buffer</b>	PBS, 50% glycerol, 0.05% Proclin 300, 0.05%protective protein
<b>Purification</b>	Protein A

**Application**

<b>Dilution Ratio</b>	WB 1:2000-1:10000,IHC 1:200-1:1000,ICC/IF 1:200-1:1000,ELISA 1:5000-1:20000,IP 1:50-1:200
<b>Molecular Weight</b>	Calculated MW:21kD;Observed MW:21kD

**Antigen Information**

<b>Gene Name</b>	FTH1
<b>Alternative Names</b>	FTH1;FTH;FTHL6;OK/SW-cl.84;PIG15;Ferritin heavy chain;Ferritin H subunit;Cell proliferation-inducing gene 15 protein
<b>Gene ID</b>	14319
<b>SwissProt ID</b>	P09528
<b>Immunogen</b>	A synthetic peptide of mouse Ferritin Heavy Chain

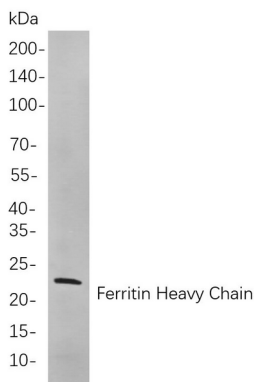
**Background**

Cell localization:Cytoplasm.This gene encodes the heavy subunit of ferritin, the major intracellular iron storage protein in

prokaryotes and eukaryotes. It is composed of 24 subunits of the heavy and light ferritin chains. Variation in ferritin subunit composition may affect the rates of iron uptake and release in different tissues. A major function of ferritin is the storage of iron in a soluble and nontoxic state. Defects in ferritin proteins are associated with several neurodegenerative diseases. This gene has multiple pseudogenes. Several alternatively spliced transcript variants have been observed, but their biological validity has not been determined. [provided by RefSeq, Jul 2008],

## Research Area

## Image Data



Western blot analysis of lysates from Mouse liver cells, using Ferritin Heavy Chain Rabbit mAb. The HRP-conjugated Goat anti-Rabbit IgG antibody was used to detect the antibody.